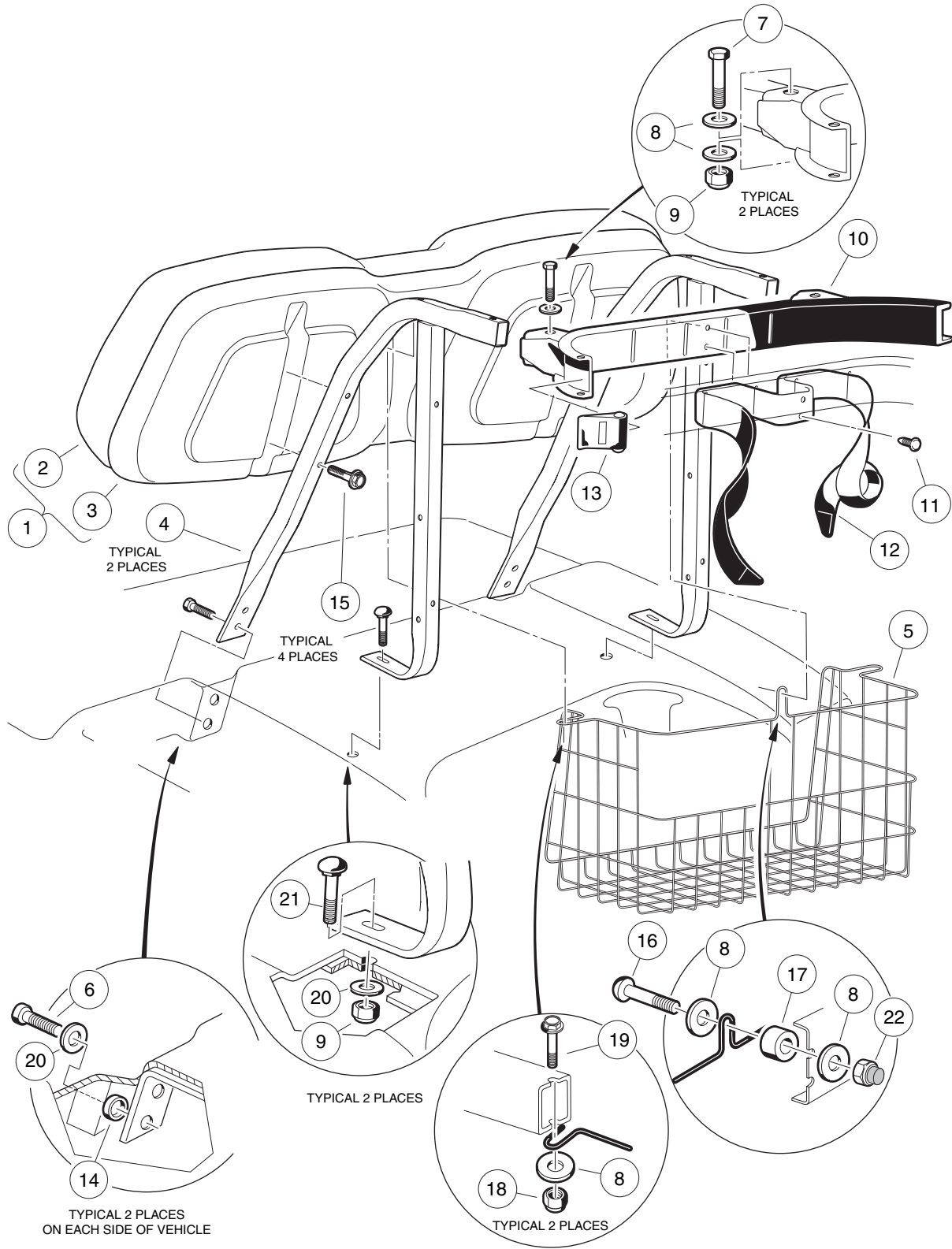


**1**  
**G**  
**E**



# SEAT BACK AND BAG HOOP

ITEM	PART NO.	DESCRIPTION	QTY GAS	QTY ELEC
		1 2 3 4		
1	102238301	Assembly, Seat Back – Buff (includes items 2 and 3) .....	1	1
2	102060501	Cover, Vinyl, Seat Back – Buff .....	1	1
3	102237001	Cap, Seat Back – Black .....	1	1
1	102238302	Assembly, Seat Back – White (includes items 2 and 3) .....	1	1
2	102060502	Cover, Vinyl, Seat Back – White .....	1	1
3	102237001	Cap, Seat Back – Black .....	1	1
1	102238304	Assembly, Seat Back – Black (includes items 2 and 3) .....	1	1
2	102060504	Cover, Vinyl, Seat Back – Black .....	1	1
3	102237001	Cap, Seat Back – Black .....	1	1
1	102238305	Assembly, Seat Back – Gray (includes items 2 and 3) .....	1	1
2	102060505	Cover, Vinyl, Seat Back – Gray .....	1	1
3	102237001	Cap, Seat Back – Black .....	1	1
4	102236601	Weldment, Support, Seat Back .....	2	2
5	102236703	Basket, Sweater .....	1	1
6	101910401	Screw, Self-Tapping, 5/16-18 x 1-1/4 .....	4	4
7	1010921	Screw, Hex-Head Cap, 5/16-18 x 2-1/2 .....	2	2
8	1015075	Washer, Flat, 5/16 .....	8	8
9	7473	Nut, Nylon Lock, 5/16-18 .....	4	4
10	1013935	Assembly, Bag Hoop (includes items 11 - 13) .....	1	1
11	1010434	Fastener, Plastic Barrel .....	2	2
12	1010413	Strap, Bag .....	1	1
13	1013754	Buckle, Bag Strap .....	2	2
14	1017774	Spacer, Body .....	4	4
15	102076701	Screw, SEMS (with patch) 1/4-20 x 1-3/4 .....	4	4
16	8418	Screw, Phillips Truss-Head, 1/4-20 x 1-1/2 .....	1	1
17	1014482	Spacer, Nylon .....	1	1
18	1028	Nut, Hex, 1/4-20 .....	2	2
19	7479	Screw, Hex-Head Cap, 1/4-20 x 1-1/4 .....	2	2
20	1241	Washer, Flat, 5/16 .....	6	6
21	7818	Bolt, Carriage, 5/16-18 x 1-1/2 .....	2	2
22	102242401	Nut, Nylon Insert with Cap, 1/4-20 .....	1	1

1  
G  
E