



**CARGO BOX
WILL FIT E-Z-GO® RXV™
INSTALLATION INSTRUCTIONS**

04-006

INCLUDED:

- 2 MAIN BRACKETS
- 2 BAGWELL BRACKET
- 2 CARGO BOX BRACKETS



Main Brackets



Bagwell Brackets



Cargo Box Brackets

1
Using a T45 Torx driver,
remove four bolts holding
factory bag attachment to rear
strut assembly.



2
Remove front seat bench and front
seat lean back. Retain hardware.





Remove motor cover. Retain all hardware. You will need it later.

3

4

Prop up canopy.



Remove bolts attaching factory seat/support bar and roof struts. Retain hardware.

5

Remove bolts attaching factory seat/strut support bar to frame. Remove factory seat/strut support bars.





Replace with MadJax seat/strut support bar using same hardware. Reinstall bolts through frame and tighten.

Using 90mm hardware, attach rear struts and cargo box bracket to main bracket.

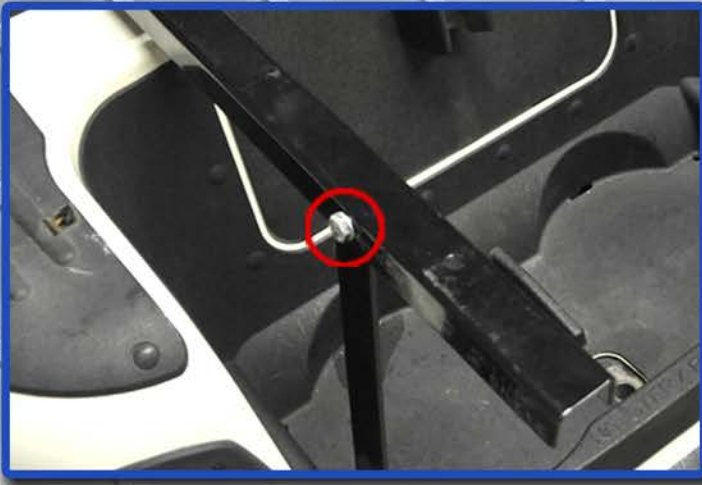


Be sure main bracket faces inward as shown. Reinstall motor cover.



Remove factory bagwell bolts and install bagwell bracket using retained hardware as shown.





Using 25mm hardware, attach bagwell bracket to main bracket as shown and tighten.

Reattach seat back using retained hardware from step 2.



**ATTACH
HARDWARE**

Attach cargo box to cargo box brackets using 10mm x 40mm hardware. Once all bolts are in place, tighten.

CARGO BOX HARDWARE PACKS

- (4) 10MM X 90MM SHOULDER HEX BOLTS (STRUTS TO MAIN BRACKET AND MOUNTING BRACKET)
- (4) 10MM X 40MM SHOULDER HEX BOLTS (CARGO BOX TO MOUNTING BRACKET)
- (2) 10MM X 25MM SHOULDER HEX BOLTS (MOUNTING BRACKET TO BAGWEL BRACKET)
- (20) 10MM X 20MM X 2MM WASHERS
- (10) 10MM ANTI-SLIP NUTS

E-Z-GO®, TXT™, RXV™ are trademarks of Textron Innovations, Inc. ("Textron"). Reference to Textron's trademarks and products is only for purposes of identifying golf carts with which this Madjax product is compatible. Madjax products are aftermarket parts and are not original equipment parts. Madjax is not connected or affiliated with or sponsored by Textron.