



A Textron Company

# RXV ELECTRIC SERVICE PARTS MANUAL



# 607975

ISSUED JANUARY 2008

REVISED JUNE 2008



# SERVICE PARTS MANUAL

## ELECTRIC POWERED FLEET & PERSONAL GOLF CARS

RXV GOLF CAR

RXV FREEDOM™

RXV SHUTTLE 2 + 2

## STARTING MODEL YEAR 2008

E-Z-GO Division of TEXTRON, Inc. reserves the right to incorporate engineering and design changes to products in this Manual, without obligation to include these changes on units leased/sold previously.

The information contained in this Manual may be revised periodically by the E-Z-GO Division, and therefore is subject to change without notice.

The E-Z-GO Division **DISCLAIMS LIABILITY FOR ERRORS IN THIS MANUAL**, and the E-Z-GO Division **SPECIFICALLY DISCLAIMS LIABILITY FOR INCIDENTAL AND CONSEQUENTIAL DAMAGES** resulting from the use of the information and materials in this Manual.

### TO CONTACT US

#### NORTH AMERICA:

**TECHNICAL ASSISTANCE & WARRANTY PHONE: 1-800-774-3946, FAX: 1-800-448-8124**

**SERVICE PARTS PHONE: 1-888-GET-EZGO (1-888-438-3946), FAX: 1-800-752-6175**

#### INTERNATIONAL:

**SALES PHONE: 001-706-798-4311, FAX: 001-706-771-4609**

**E-Z-GO DIVISION OF TEXTRON, INC., 1451 MARVIN GRIFFIN ROAD, AUGUSTA, GEORGIA USA 30906-3852**

## **NOTES**

To obtain a copy of the limited warranty applicable to the vehicle, call or write a local Distributor, authorized Branch or the Warranty Department with the vehicle serial number and the manufacturer code.

The use of non Original Equipment Manufacturer (OEM) approved parts may void the warranty.

Overfilling batteries may void the warranty.

### **BATTERY PROLONGED STORAGE**

All batteries will self discharge over time. The rate of self discharge varies depending on the ambient temperature and the age and condition of the batteries.

A fully charged battery will not freeze in winter temperatures unless the temperature falls below -75° F (-60° C).

As with all electric vehicles, the batteries must be checked and recharged as required or at a minimum of 30 day intervals.

# TABLE OF CONTENTS

| SECTION  | Page No. |
|--|----------|
| <b>HOW TO USE THE SERVICE PARTS MANUAL</b> ..... | Vii      |
| <b>ACCELERATOR PEDAL ASSEMBLY</b> .....          | A-1      |
| • Accelerator Pedal Pad                          |          |
| • Accelerator Pedal Assembly                     |          |
| • Switches                                       |          |
| <b>BATTERY CHARGER</b> .....                     | B-1      |
| • Charger  |          |
| • Charger Cords                                  |          |
| • Cover  |          |
| • Handle   |          |
| <b>BODY - FRONT</b> .....                        | C-1      |
| • Front Bumper                                   |          |
| • Front Splash Shield                            |          |
| • Cowl   |          |
| • Nameplate                                      |          |
| • Instrument Panel                               |          |
| • Instrument Panel Trim                          |          |
| • Cup Holder                                     |          |
| <b>BODY - MID SECTION</b> .....                  | C-5      |
| • Pedal Cover                                    |          |
| • Floorboard                                     |          |
| • Floormat                                       |          |
| • Rocker Panels                                  |          |
| <b>BODY - REAR</b> .....                         | C-7      |
| • Rear Body                                      |          |
| • Rear Splash Shields                            |          |
| • Seat Support                                   |          |
| • Bagwell Liner                                  |          |
| • Access Panel                                   |          |
| • Scuff Guards                                   |          |
| • Rear Bumper                                    |          |
| <b>BODY - ACCESSORIES</b> .....                  | C-11     |
| • Side Baskets                                   |          |
| • Sand Bottle                                    |          |
| • Cooler   |          |
| • Soft Swipe                                     |          |
| • Divot Repair                                   |          |
| • Club & Ball Washer                             |          |
| <b>BRAKES - PEDAL</b> .....                      | D-1      |
| • Brake Pedal Pad                                |          |
| • Brake Pedal Assembly                           |          |
| • Brake Pedal Return Spring                      |          |
| • Switches                                       |          |
| <b>BRAKES - MOTOR BRAKE</b> .....                | D - 3    |
| • Motor Brake Assembly                           |          |
| • Brake Handle                                   |          |
| • Handle Return Spring                           |          |

# TABLE OF CONTENTS

| SECTION  | Page No.     |
|--|--------------|
| <b>ELECTRICAL SYSTEM - MAIN COMPONENTS</b> ..... | <b>E-1</b>   |
| • Main Harness                                   |              |
| • Solenoid                                       |              |
| • Reverse Warning Indicator                      |              |
| • Run / Tow Switch                               |              |
| • Run Plug                                       |              |
| • Controller Splash Shield                       |              |
| • Key Switch                                     |              |
| • Charger Receptacle                             |              |
| • Solenoid Wires                                 |              |
| <b>ELECTRICAL SYSTEM - BATTERIES</b> .....       | <b>E - 5</b> |
| • Batteries                                      |              |
| • Battery Tray                                   |              |
| • Battery Hold Down                              |              |
| • Battery Strap                                  |              |
| • Wires  |              |
| <b>ELECTRICAL ACCESSORIES</b> .....              | <b>E-7</b>   |
| • Horn Assembly                                  |              |
| • Horn Button                                    |              |
| • State of Charge Meter                          |              |
| • Headlights                                     |              |
| • Tail Lights                                    |              |
| • Turn Signal Switch                             |              |
| • Headlight Switch                               |              |
| <b>ELECTRONIC SPEED CONTROL</b> .....            | <b>F - 1</b> |
| • Controller Assembly                            |              |
| • Resistor Assembly                              |              |
| • Resistor Mounting Bracket                      |              |
| • Sensor   |              |
| <b>FRONT SUSPENSION - STRUTS</b> .....           | <b>G-1</b>   |
| • Strut Assemblies                               |              |
| • Spindles                                       |              |
| • A-Arm  |              |
| • Front Hub                                      |              |
| • Wheel Bolt                                     |              |
| <b>FRONT SUSPENSION - STEERING</b> .....         | <b>G - 5</b> |
| • Steering Rack Assembly                         |              |
| • Steering Column                                |              |
| • Steering Wheel                                 |              |
| • Score Card Holder                              |              |
| <b>MOTOR</b> .....                               | <b>H-1</b>   |
| • AC Motor                                       |              |
| • Flexloom Sleeve                                |              |
| <b>REAR AXLE</b> .....                           | <b>J - 1</b> |
| • Axle Assembly                                  |              |
| • Rear Hub                                       |              |
| • Wheel Bolt                                     |              |
| • Axle Shaft                                     |              |

# TABLE OF CONTENTS

| SECTION  | Page No.     |
|--|--------------|
| <b>REAR SUSPENSION</b> .....                       | <b>K - 1</b> |
| • Shocks   |              |
| • Leaf Spring                                      |              |
| • Shackles   |              |
| • Bushings   |              |
| <b>SEATING &amp; BASKET- FRONT SEAT</b> .....      | <b>L - 1</b> |
| • Front Seat Bottom                                |              |
| • Front Seat Back                                  |              |
| • Hip Restraints                                   |              |
| • Seat Back Support                                |              |
| • Sweater Basket                                   |              |
| • Bag Strap  |              |
| • Bag Strap Clamp                                  |              |
| <b>SEATING - REAR SEAT 2 + 2</b> .....             | <b>L - 5</b> |
| • Rear Seat Bottom                                 |              |
| • Rear Seat Back                                   |              |
| • Seat Back Support                                |              |
| • Seat Hinge                                       |              |
| • Arm Rest   |              |
| • Rear Seat Floor Board Assembly                   |              |
| <b>TOW BAR - PERMANENT TOWING VEHICLE</b> .....    | <b>M - 1</b> |
| • Tow Bar  |              |
| • Latch  |              |
| • Retainer   |              |
| <b>TOW BAR - PERMANENT TOWED VEHICLE</b> .....     | <b>M - 3</b> |
| • Steering Link                                    |              |
| • Front Casting                                    |              |
| • Spacer   |              |
| • Rod Ends   |              |
| <b>WEATHER PROTECTION - GOLF CAR SUN TOP</b> ..... | <b>N - 1</b> |
| • Sun Top  |              |
| • Top Struts                                       |              |
| <b>WEATHER PROTECTION - SHUTTLE 2+2</b> .....      | <b>N - 3</b> |
| • Sun Top  |              |
| • Top Struts                                       |              |
| <b>WEATHER PROTECTION - WINDSHIELD</b> .....       | <b>N - 5</b> |
| • Windshield                                       |              |
| <b>WHEELS AND TIRES</b> .....                      | <b>P - 1</b> |
| • Tires  |              |
| • Wheels   |              |
| • Lug Nuts   |              |
| • Dust Cap   |              |
| • Wheel Cover                                      |              |

**NOTES**

A large grid of graph paper for taking notes, consisting of 20 columns and 30 rows of small squares.



# HOW TO USE THE SERVICE PARTS MANUAL

This manual is divided into several sections:

## GENERAL INFORMATION

- TABLE OF CONTENTS
- HOW TO USE THE SERVICE PARTS MANUAL

## ILLUSTRATED PARTS BREAKDOWN

- Contains illustrations and parts lists for all systems of the vehicle.

## USE OF THE MANUAL

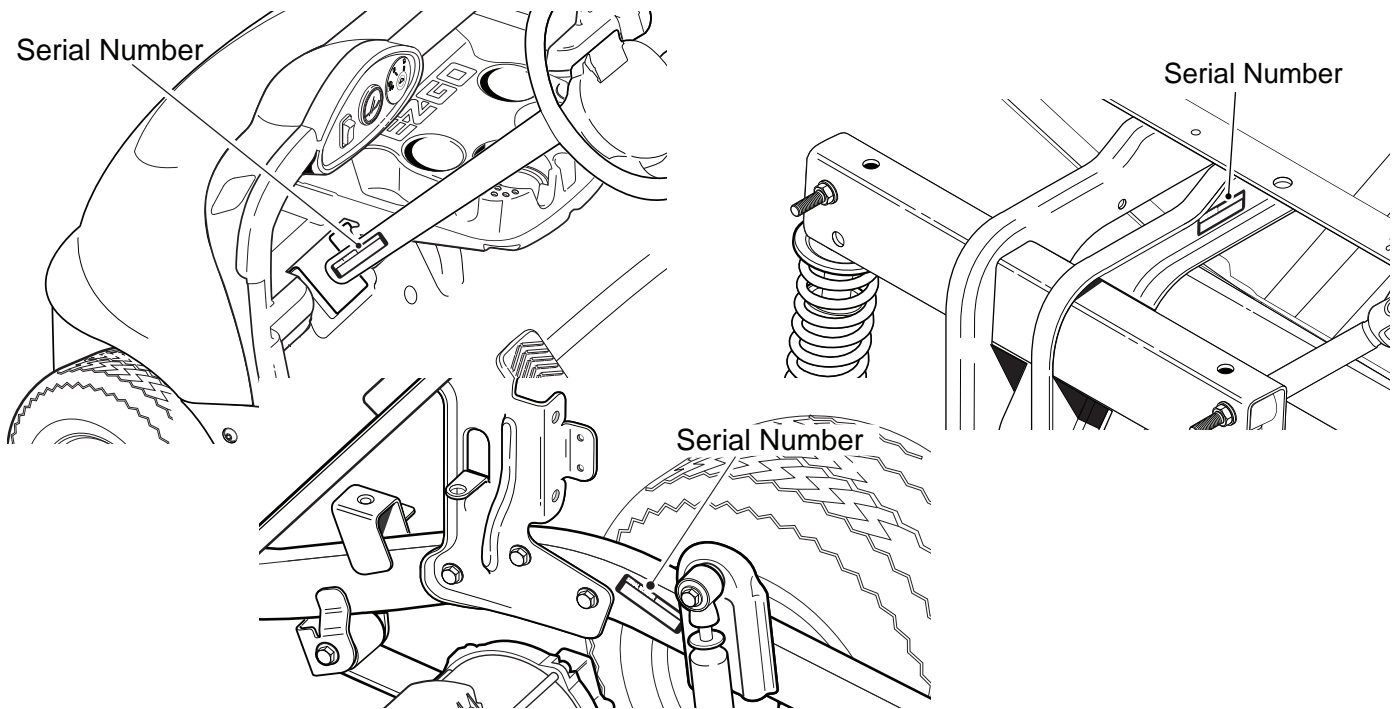
To use this manual, consult the TABLE OF CONTENTS (page iii) to locate the information or illustration required.

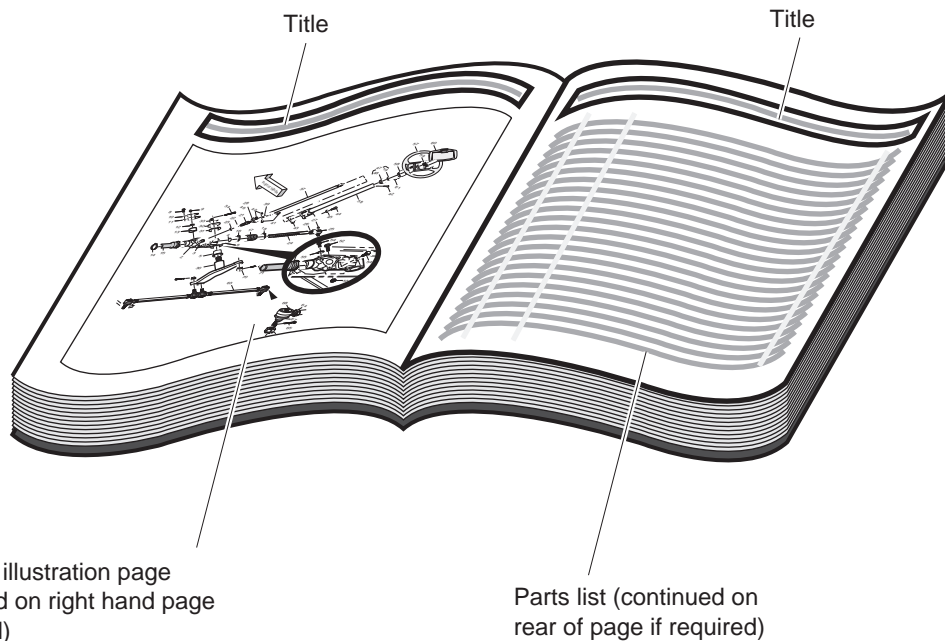
Introduction of some revisions varies due to supply of components; therefore, it is possible that various combinations of components may be found that are not directly reflected by each illustration. Consult the illustration that best suits your situation. Locate the serial number. It is important that the serial number of your vehicle and its model number be supplied to Service Parts when ordering any replacement components.

## SERIAL NUMBER LOCATION

Three serial number and manufacture date code labels are on the vehicle. One is placed on the steering column, the second is located on the frame member under the front splash shield on the driver side and the third is located on the passenger side frame rail at the rear of the vehicle.

In order to obtain correct components for the vehicle, the manufacture date code, serial number and vehicle model must be provided when ordering service parts.





## 1. WHEN THE PART NUMBER IS NOT KNOWN

- Determine the function and application of the part required. Turn to the TABLE OF CONTENTS and select the most appropriate component description.
- Turn to the page number indicated and locate the part description in the parts list. Read the full accompanying description for specific information regarding the part that was not shown in the index.
- From the parts list, obtain the item number assigned to it and confirm that the part selected is correct by verifying it with the pictorial representation on the illustrated page.

Should an asterisk (\*) appear in the part number column on the parts list page, read upwards until a part number is found. The part number is the lowest assembly sold by Service Parts. The asterisk (\*) indicates that the part depicted is not available for purchase.

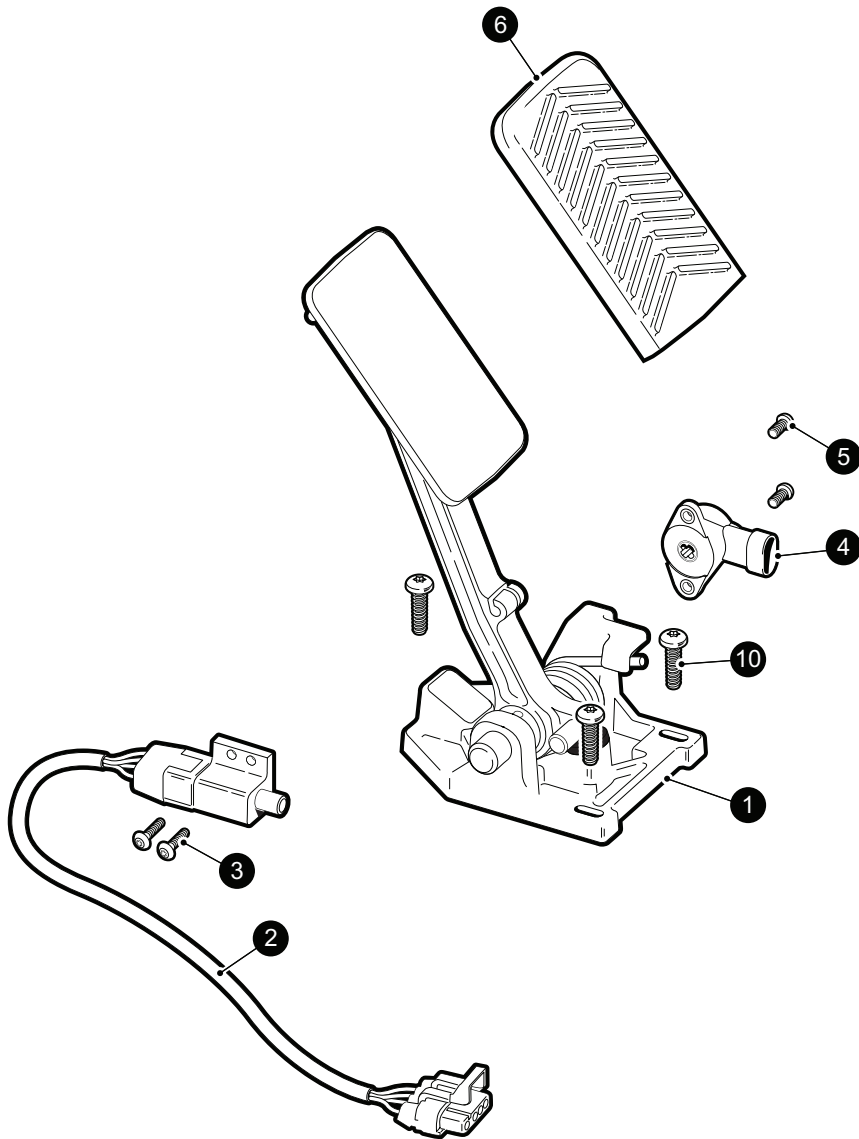
NOTE: Descriptions are indented under the assembly that they are used on. That assembly is, in turn listed under the assembly that it is used on. This process is repeated until the highest final assembly is reached.

**To facilitate the maintenance and repair of the vehicle, a Technician's Repair and Service Manual is available from the Service Parts Department.**

# **ILLUSTRATED PARTS BREAKDOWN**

# **ILLUSTRATED PARTS BREAKDOWN**

# ACCELERATOR



When ordering parts, please specify the model and serial number of the product.

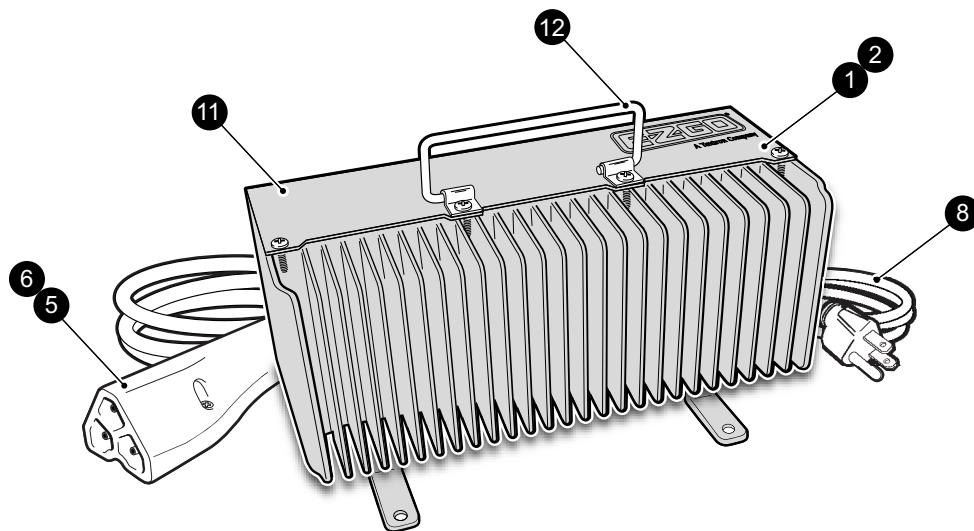
\* Indicates a component that is not available as an individual part.

\*\*\* Indicates consult Customer Service Department for additional information.

| ITEM | PART NO. | 1 2 3 4 5 | DESCRIPTION   | QTY. |
|------|----------|-----------|---|------|
| 1    | 604692   |           | ACCELERATOR PEDAL ASSEMBLY (includes items 2-6) ..... | 1    |
| 2    | 607605   |           | ACCELERATOR PEDAL SWITCH .....                        | 1    |
| 3    | 620030   |           | SOCKET HEAD CAP SCREW, M5 - 0.8 - 6g X 10 .....       | 2    |
| 4    | 600019   |           | ROTARY POSITION SENSOR.....                           | 1    |
| 5    | 600543   |           | BUTTON HEAD TORX BOLT, M4 - 7 X 13.....               | 2    |
| 6    | 600255   |           | ACCELERATOR PEDAL PAD .....                           | 1    |
| 7    |          |           |   |      |
| 8    |          |           |   |      |
| 9    |          |           |   |      |
| 10   | 606277   |           | PAN HEAD TORX SCREW, M8 X 29 .....                    | 3    |

# BATTERY CHARGER

- ① 48V Battery Charger with 3 meter Cord includes items 5,8,11,12 & 14
- ② 48V Battery Charger with 5.5 meter Cord includes items 6,8,11,12 & 14
- ⑭ Charger EMI Board Assembly (not shown)
- ⑱ Strain Relief Kit (not shown)



# BATTERY CHARGER

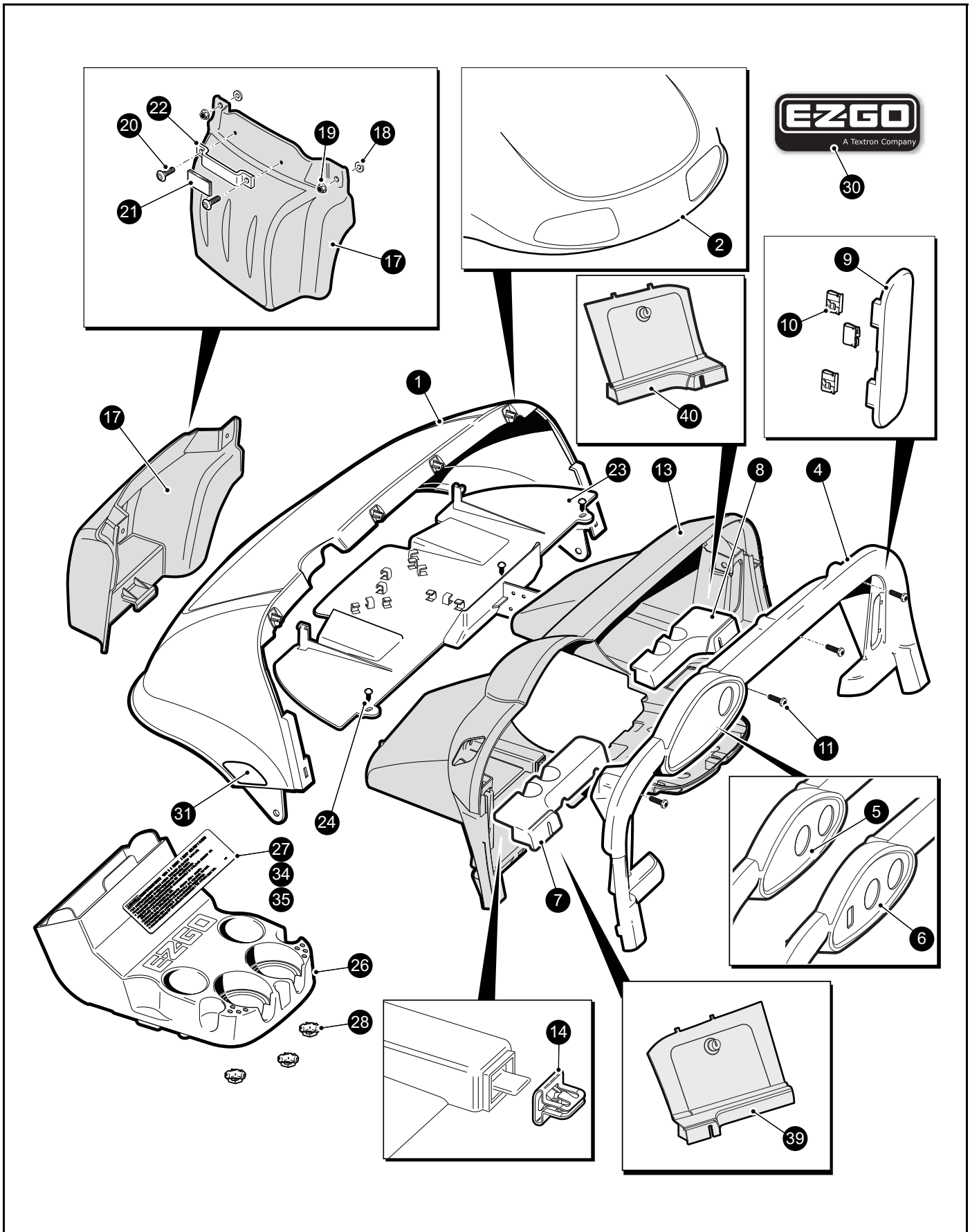
When ordering parts, please specify the model and serial number of the product.

\* Indicates a component that is not available as an individual part.

\*\*\* Indicates consult Customer Service Department for additional information.

| ITEM | PART NO. | 1 2 3 4 5 | DESCRIPTION  | QTY. |
|------|----------|-----------|--|------|
| 1    | 602089   |           | 48V BATTERY CHARGER , 3 meter CORD (includes items 5, 8,11, 12 & 14)   | 1    |
| 2    | 603080   |           | 48V BATTERY CHARGER, 5.5 meter CORD (includes items 6, 8, 11, 12 & 14) | 1    |
| 3    |          |           |  |      |
| 4    |          |           |  |      |
| 5    | 604321   |           | DC CORD, 3 meters.....   | 1    |
| 6    | 604322   |           | DC CORD, 5.5 meters.....   | 1    |
| 7    |          |           |  |      |
| 8    | 604320   |           | AC CORD, DOMESTIC .....  | 1    |
| 9    |          |           |  |      |
| 10   |          |           |  |      |
| 11   | 605609   |           | 48V CHARGER COVER KIT (includes item 12) .....                         | 1    |
| 12   | 606296   |           | CHARGER HANDLE.....  | 1    |
| 13   |          |           |  |      |
| 14   | 605607   |           | CHARGER EMI BOARD ASSEMBLY .....                                       | 1    |
| 15   |          |           |  |      |
| 16   |          |           |  |      |
| 17   |          |           |  |      |
| 18   | 608863   |           | STRAIN RELIEF KIT.....   | 1    |

# BODY





When ordering parts, please specify the model and serial number of the product.

\* Indicates a component that is not available as an individual part.

\*\*\* Indicates consult Customer Service Department for additional information.

| ITEM | PART NO.  | 1 2 3 4 5 | DESCRIPTION   | QTY. |
|------|-----------|-----------|---|------|
| 1    | 6XXXXX*** |           | FRONT COWL, WITHOUT HEADLIGH OPENING (see colors below) .....<br>606953 .... IVORY<br>606954 .... FORREST GREEN<br>606955 .... PATRIOT BLUE<br>606956 .... BLACK<br>606957 .... MOLTEN RED<br>606958 .... BRIGHT WHITE<br>606959 .... FLAME RED<br>606960 .... STEEL BLUE<br>608476 .... PLATINUM<br>608477 .... ALMOND<br>608493 .... ELECTRIC BLUE<br>608494 .... INFERNO RED | 1    |
| 2    | 6XXXXX*** |           | FRONT COWL, WITH HEADLIGHT OPENING (see colors below) .....<br>620227 .... IVORY<br>620228 .... FORREST GREEN<br>620229 .... PATRIOT BLUE<br>620230 .... BLACK<br>620231 .... MOLTEN RED<br>620232 .... BRIGHT WHITE<br>620233 .... FLAME RED<br>620234 .... STEEL BLUE<br>608478 .... PLATINUM<br>608479 .... ALMOND<br>608516 .... ELECTRIC BLUE<br>608517 .... INFERNO RED   | 1    |
| 3    |           |           |   |      |
| 4    | 600242    |           | INSTRUMENT PANEL TRIM, OPENING FOR KEY SWITCH ONLY .....  | 1    |
| 5    | 608808    |           | INSTRUMENT PANEL TRIM, OPENING FOR KEY SWITCH & SOC .....   | 1    |
| 6    | 608864    |           | INSTRUMENT PANEL TRIM, OPENING FOR KEY SW, SOC & LIGHT SW.  | 1    |
| 7    | 600243    |           | BALL HOLDER INSERT, DRIVER SIDE.....  | 1    |
| 8    | 600241    |           | BALL HOLDER INSERT, PASSENGER SIDE .....  | 1    |
| 9    | 602388    |           | ACCESS COVER ASSEMBLY (includes item 10) .....  | 1    |
| 10   | 602100    |           | U-CLIP .....  | 3    |
| 11   |           |           |   |      |

# BODY

When ordering parts, please specify the model and serial number of the product.

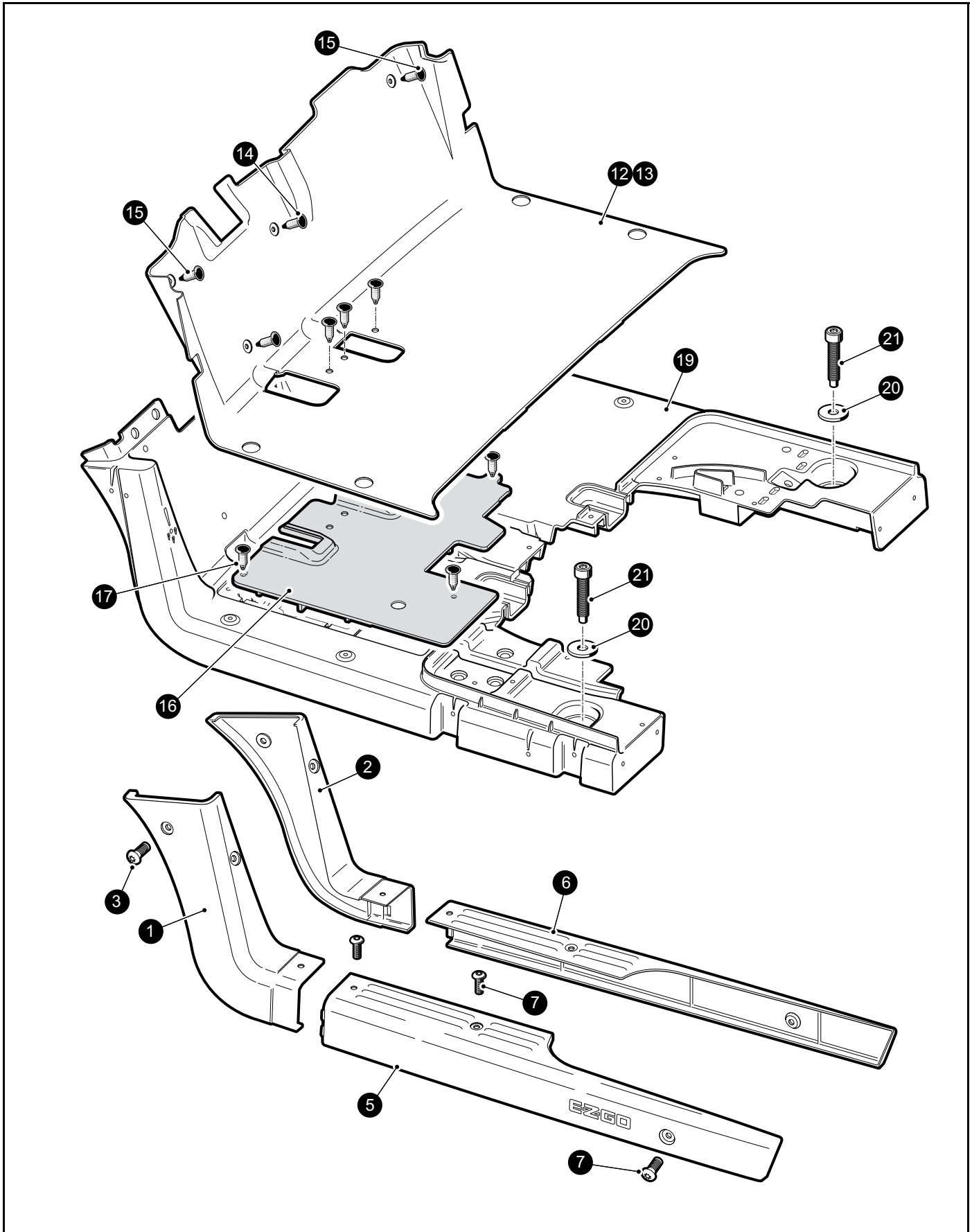
\* Indicates a component that is not available as an individual part.

\*\*\* Indicates consult Customer Service Department for additional information.

| ITEM | PART NO. | 1 2 3 4 5 | DESCRIPTION  | QTY. |
|------|----------|-----------|--|------|
| 12   |          |           |  |      |
| 13   | 602387   |           | INSTRUMENT PANEL (includes item 14) .....                    | 1    |
| 14   | 602184   |           | SPRING CLIP .....  | 4    |
| 15   |          |           |  |      |
| 16   |          |           |  |      |
| 17   | 605935   |           | FRONT BUMPER .....   | 1    |
| 18   | 604066   |           | FLAT WASHER, M10 (O.D. 30, I.D. 10.5, THK. 1.75).....        | 1    |
| 19   | 600525   |           | FLANGED HEX NUT WITH PLASTIC INSERT, M10-1.5.....            | 1    |
| 20   | 608290   |           | PAN HEAD PHILLIPS SCREW, #10 - 16 SELF TAPING .....          | 2    |
| 21   | 14382G7  |           | NOISE SUPPRESION STRIP .....                                 | 1    |
| 22   | 608469   |           | COWL SUPPORT .....   | 1    |
| 23   | 601634   |           | FRONT SPLASH GUARD .....                                     | 1    |
| 24   | 16816G2  |           | CHRISTMAS TREE RIVET (.25 x .88) .....                       | 3    |
| 25   |          |           |  |      |
| 26   | 602101   |           | CUPHOLDER ASSEMBLY (includes item 27) .....                  | 1    |
| 27   | 608522   |           | WARNING AND INSTRUCTION DECAL.....                           | 1    |
| 28   | 71597G01 |           | SELF THREADING NUT .....                                     | 3    |
| 29   |          |           |  |      |
| 30   | 606405   |           | E - Z - GO NAMEPLATE .....                                   | 1    |
| 31   | 608991   |           | YELLOW REFLECTOR, FRONT .....                                | 2    |
| 32   |          |           |  |      |
| 33   |          |           |  |      |
| 34   | 608528   |           | WARNING AND INSTRUCTION DECAL (Freedom vehicles) .....       | 1    |
| 35   | 608701   |           | WARNING AND INSTRUCTION DECAL, PICTOGRAMS (CE vehicles)..... | 1    |
| 36   |          |           |  |      |
| 37   |          |           |  |      |
| 38   |          |           |  |      |
| 39   | 607533   |           | GLOVE BOX, DRIVER SIDE.....                                  | 1    |
| 40   | 607131   |           | GLOVE BOX, PASSENGER SIDE .....                              | 1    |
| 41   |          |           |  |      |
| 42   |          |           |  |      |



# BODY

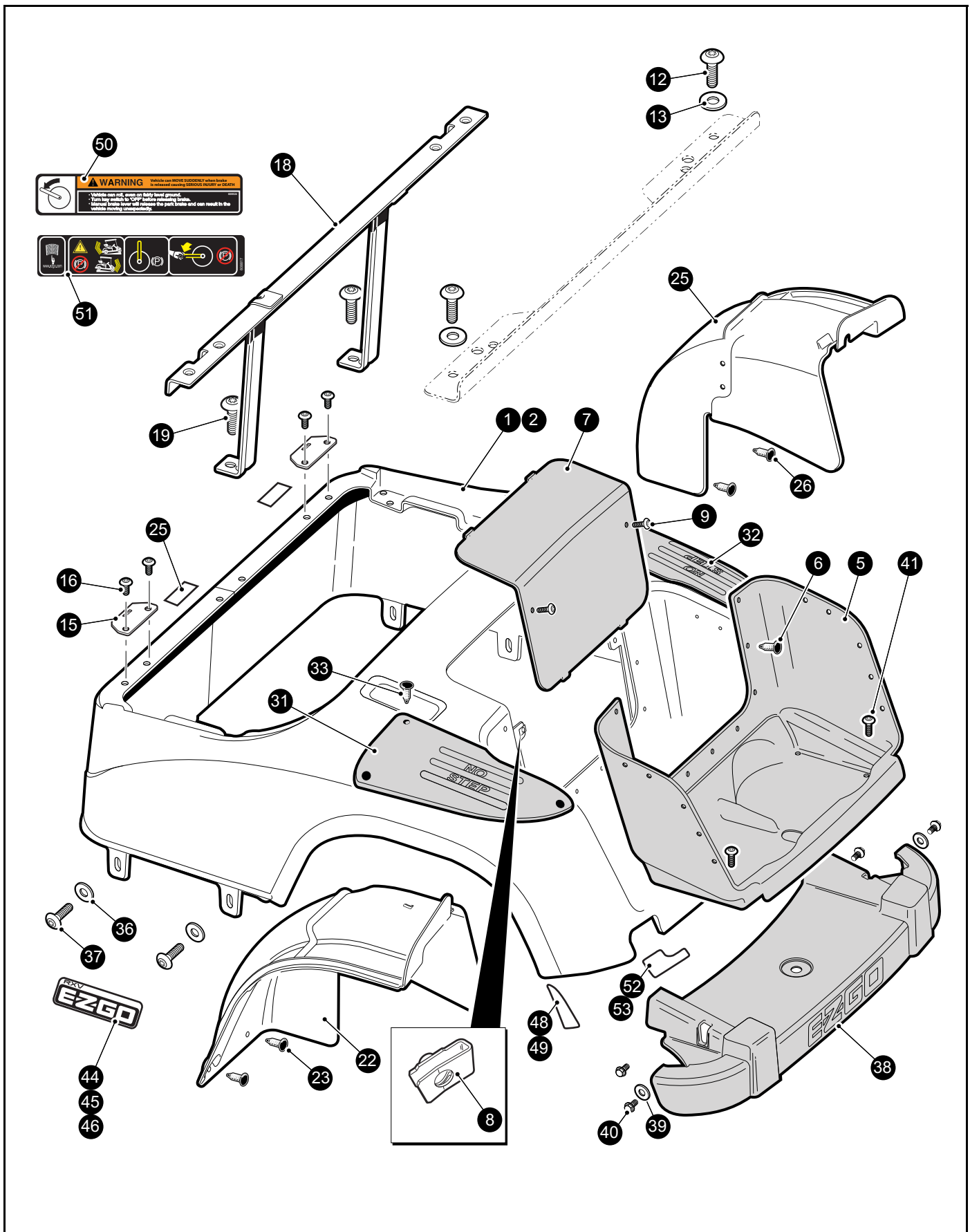


When ordering parts, please specify the model and serial number of the product.

\* Indicates a component that is not available as an individual part.

\*\*\* Indicates consult Customer Service Department for additional information.

| ITEM | PART NO. | 1 2 3 4 5 | DESCRIPTION  | QTY. |
|------|----------|-----------|--|------|
| 1    | 601257   |           | UPPER ROCKER PANEL, DRIVER SIDE .....                  | 1    |
| 2    | 601258   |           | UPPER ROCKER PANEL, PASSENGER SIDE .....               | 1    |
| 3    | 605957   |           | BUTTON HEAD TORX SCREW, THREAD FORMING, M8 .....       | 2    |
| 4    |          |           |  |      |
| 5    | 600253   |           | LOWER ROCKER PANEL, DRIVER SIDE .....                  | 1    |
| 6    | 600257   |           | LOWER ROCKER PANEL, PASSENGER SIDE .....               | 1    |
| 7    | 605957   |           | BUTTON HEAD TORX SCREW, THREAD FORMING, M8 .....       | 3    |
| 8    |          |           |  |      |
| 9    |          |           |  |      |
| 10   |          |           |  |      |
| 11   |          |           |  |      |
| 12   | 601118   |           | FLOORMAT WITHOUT HOLE FOR HORN.....                    | 1    |
| 13   | 603707   |           | FLOORMAT WITH HOLE FOR HORN .....                      | 1    |
| 14   | 16816G2  |           | CHRISTMAS TREE RIVET (.25 X .88) .....                 | 5    |
| 15   | 16816G1  |           | CHRISTMAS TREE RIVET (.25 X .68) .....                 | 2    |
| 16   | 605277   |           | PEDAL COVER PLATE .....                                | 1    |
| 17   | 16816G2  |           | CHRISTMAS TREE RIVET (.25 X .88) .....                 | 4    |
| 18   |          |           |  |      |
| 19   | 603798   |           | FLOOR BOARD.....                                       | 1    |
| 20   | 604066   |           | FLAT WASHER, M10 (O.D. 30, I.D. 10.5, THK. 1.75) ..... | 2    |
| 21   | 602020   |           | TORX SOCKET HEAD CAP SCREW, M10 - 1.5 X 50 .....       | 2    |



When ordering parts, please specify the model and serial number of the product.

\* Indicates a component that is not available as an individual part.

\*\*\* Indicates consult Customer Service Department for additional information.

| ITEM | PART NO. | 1 2 3 4 5 | DESCRIPTION  | QTY. |
|------|----------|-----------|--|------|
| 1    | 6XXXXX   |           | REAR BODY ASSEMBLY WITHOUT LIGHT OPENINGS (includes items 5 - 9)<br>(see colors below) ..... | 1    |
|      |          |           | 620243 .... IVORY  |      |
|      |          |           | 620244 .... FORREST GREEN  |      |
|      |          |           | 620245 .... PATRIOT BLUE   |      |
|      |          |           | 620246 .... BLACK  |      |
|      |          |           | 620247 .... MOLTEN RED   |      |
|      |          |           | 620248 .... BRIGHT WHITE   |      |
|      |          |           | 620249 .... FLAME RED  |      |
|      |          |           | 620250 .... STEEL BLUE   |      |
|      |          |           | 608549 .... PLATINUM   |      |
|      |          |           | 608550 .... ALMOND   |      |
|      |          |           | 608551 .... ELECTRIC BLUE  |      |
|      |          |           | 608552 .... INFERNO RED  |      |
| 2    | 6XXXXX   |           | REAR BODY ASSEMBLY WITH LIGHT OPENINGS (includes items 5-9)<br>(see colors below) .....      | 1    |
|      |          |           | 620251 .... IVORY  |      |
|      |          |           | 620252 .... FORREST GREEN  |      |
|      |          |           | 620253 .... PATRIOT BLUE   |      |
|      |          |           | 620254 .... BLACK  |      |
|      |          |           | 620255 .... MOLTEN RED   |      |
|      |          |           | 620256 .... BRIGHT WHITE   |      |
|      |          |           | 620257 .... FLAME RED  |      |
|      |          |           | 620258 .... STEEL BLUE   |      |
|      |          |           | 608553 .... PLATINUM   |      |
|      |          |           | 608554 .... ALMOND   |      |
|      |          |           | 608555 .... ELECTRIC BLUE  |      |
|      |          |           | 608556 .... INFERNO RED  |      |
| 3    |          |           |  |      |
| 4    |          |           |  |      |
| 5    | 601679   |           | BAGWELL LINER INSERT.....  | 1    |
| 6    | 16816G2  |           | CHRISTMAS TREE RIVET (.25 X .88) .....   | 20   |
| 7    | 600249   |           | REAR BODY ACCESS PANEL .....   | 1    |
| 8    | 602409   |           | BARREL CLIP, M6-1 .....  | 2    |
| 9    | 601326   |           | BUTTON HEAD TORX BOLT, M6 - 1 X 20.....  | 2    |
| 10   |          |           |  |      |

# BODY

When ordering parts, please specify the model and serial number of the product.

\* Indicates a component that is not available as an individual part.

\*\*\* Indicates consult Customer Service Department for additional information.

| ITEM | PART NO. | 1 2 3 4 5 | DESCRIPTION   | QTY. |
|------|----------|-----------|---|------|
| 11   |          |           |   |      |
| 12   | 602572   |           | PAN HEAD TORX BOLT, M10 - 1.5 X 25 .....              | 2    |
| 13   | 604066   |           | FLAT WASHER, M10 (O.D. 30, I.D. 10.5, THK. 1.75)..... | 2    |
| 14   |          |           |   |      |
| 15   | 602558   |           | SEAT HINGE PLATE .....                                | 1    |
| 16   | 602572   |           | PAN HEAD TORX BOLT, M10 - 1.5 X 25 .....              | 2    |
| 17   |          |           |   |      |
| 18   | 601921   |           | FRONT SEAT SUPPORT ASSEMBLY.....                      | 1    |
| 19   | 602572   |           | PAN HEAD TORX BOLT, M10 - 1.5 X 25 .....              | 2    |
| 20   |          |           |   |      |
| 21   |          |           |   |      |
| 22   | 601621   |           | REAR SPLASH GUARD, DRIVER SIDE .....                  | 1    |
| 23   | 16816G2  |           | CHRISTMAS TREE RIVET (.25 X .88) .....                | 4    |
| 24   |          |           |   |      |
| 25   | 601622   |           | REAR SPLASH GUARD, PASSENGER SIDE .....               | 1    |
| 26   | 16816G2  |           | CHRISTMAS TREE RIVET (.25 X .88) .....                | 4    |
| 27   |          |           |   |      |
| 28   | 608513   |           | RUBBER PAD .....                                      | 4    |
| 29   |          |           |   |      |
| 30   |          |           |   |      |
| 31   | 601865   |           | SCUFF GUARD, DRIVER SIDE.....                         | 1    |
| 32   | 601864   |           | SCUFF GUARD, PASSENGER SIDE .....                     | 1    |
| 33   | 16816G2  |           | CHRISTMAS TREE RIVET (.25 X .88) .....                | 6    |
| 34   |          |           |   |      |
| 35   |          |           |   |      |
| 36   | 604066   |           | FLAT WASHER, (O.D. 30, I.D. 10.5, THK. 1.75).....     | 4    |
| 37   | 605957   |           | BUTTON HEAD TORX SCREW, THREAD FORMING, M8 .....      | 4    |
| 38   | 603819   |           | REAR BUMPER .....                                     | 1    |
| 39   | 604266   |           | FLAT WASHER, M10 (O.D. 30, I.D. 10.5, THK. 1.75)..... | 2    |
| 40   | 603799   |           | HEX HEAD FLANGED BOLT, M10 - 1.5 X 25.....            | 4    |
| 41   | 608313   |           | BUTTON HEAD TORX BOLT, M10 - 1.5 X 25.....            | 2    |

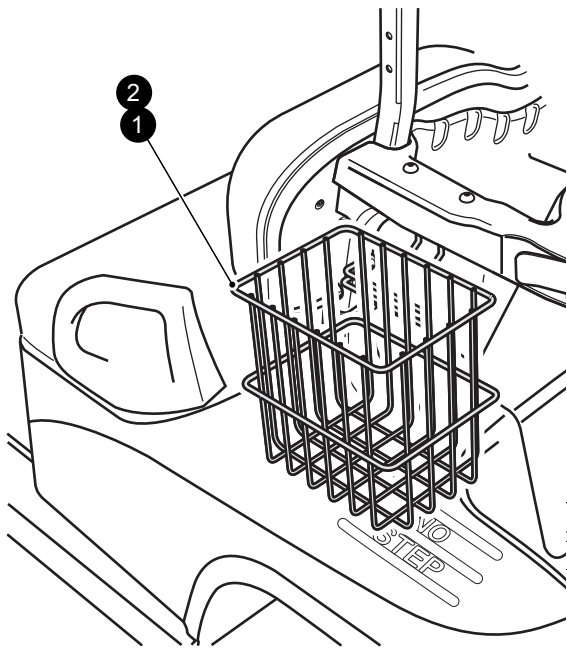


When ordering parts, please specify the model and serial number of the product.

\* Indicates a component that is not available as an individual part.

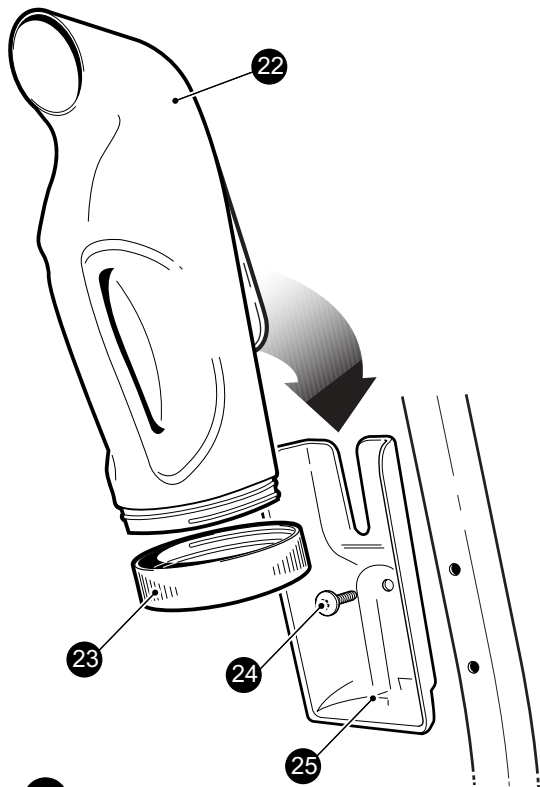
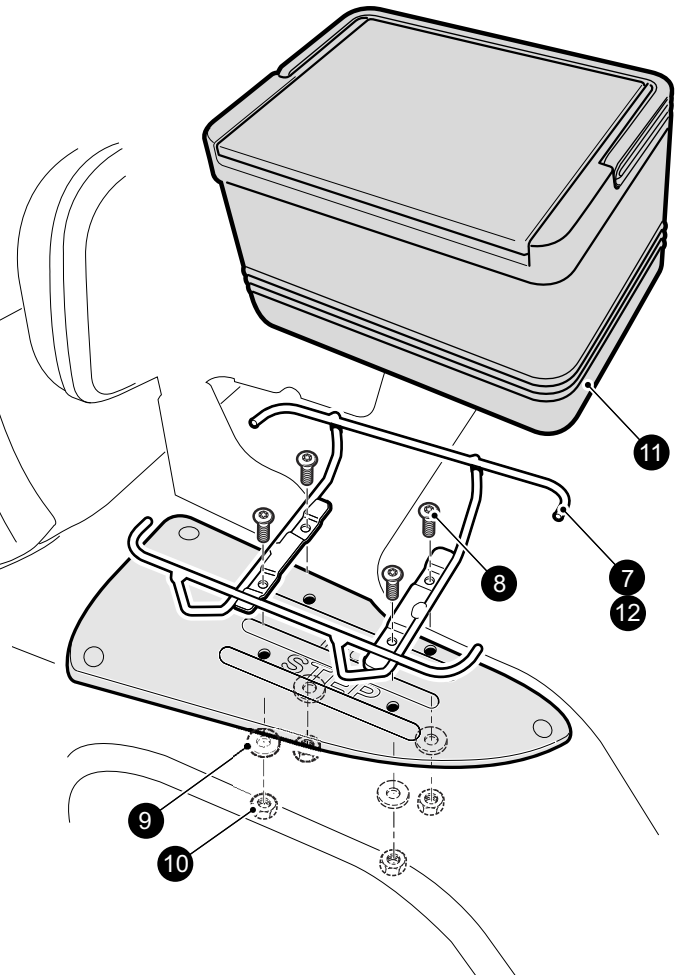
\*\*\* Indicates consult Customer Service Department for additional information.

| ITEM | PART NO. | 1 2 3 4 5 | DESCRIPTION                              | QTY. |
|------|----------|-----------|--|------|
| 42   |          |           |  |      |
| 43   |          |           |  |      |
| 44   | 607859   |           | RXV DECAL.....                           | 2    |
| 45   | 607861   |           | E - Z - GO FREEDOM DECAL.....            | 2    |
| 46   | 607863   |           | E - Z - GO 2 + 2 SHUTTLE DECAL .....     | 2    |
| 47   |          |           |  |      |
| 48   | 608993   |           | RED SIDE REFLECTOR, DRIVER SIDE .....    | 1    |
| 49   | 608996   |           | RED SIDE REFLECTOR, PASSENGER SIDE ..... | 1    |
| 50   | 608524   |           | MANUAL BRAKE WARNING LABEL .....         | 1    |
| 51   | 608817   |           | MANUAL BRAKE WARNING LABEL, CE .....     | 1    |
| 52   | 608992   |           | RED REAR REFLECTOR, DRIVER SIDE.....     | 1    |
| 53   | 608998   |           | RED REAR REFLECTOR, PASSENGER SIDE ..... | 1    |



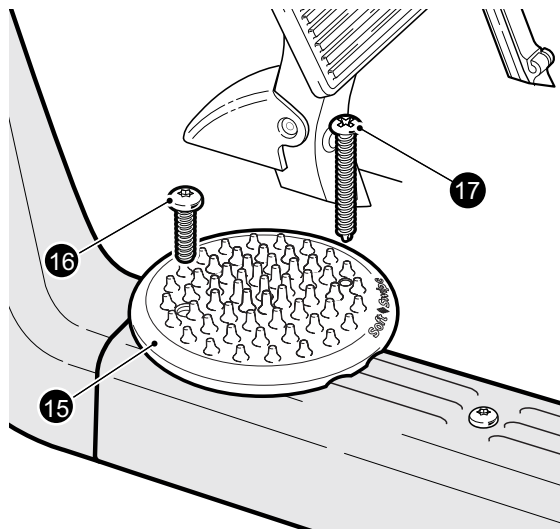
**5** Beverage Cooler Kit, Driver Side includes items 7 - 11

**6** Beverage Cooler Kit, Driver Side includes items 8 - 12



**20** Sand Bottle Kit includes items 21- 26

**21** Sand Bottle Assembly includes items 22 & 23



When ordering parts, please specify the model and serial number of the product.

\* Indicates a component that is not available as an individual part.

\*\*\* Indicates consult Customer Service Department for additional information.

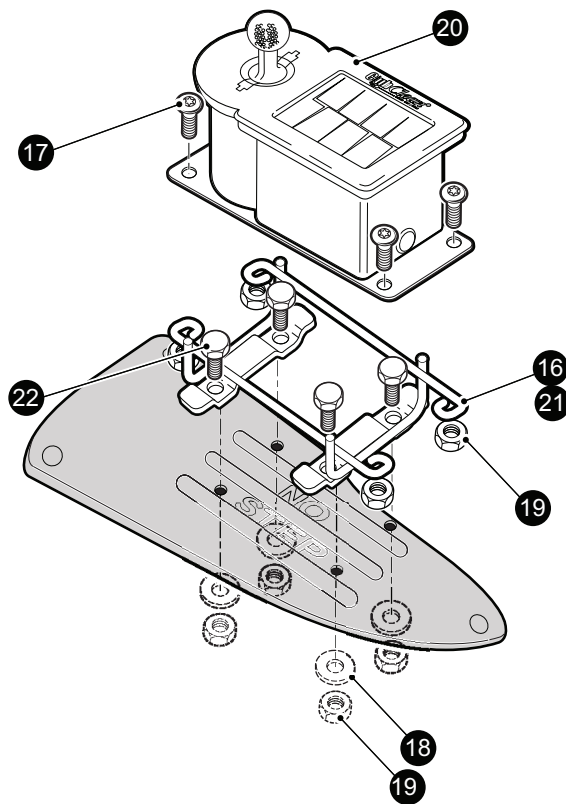
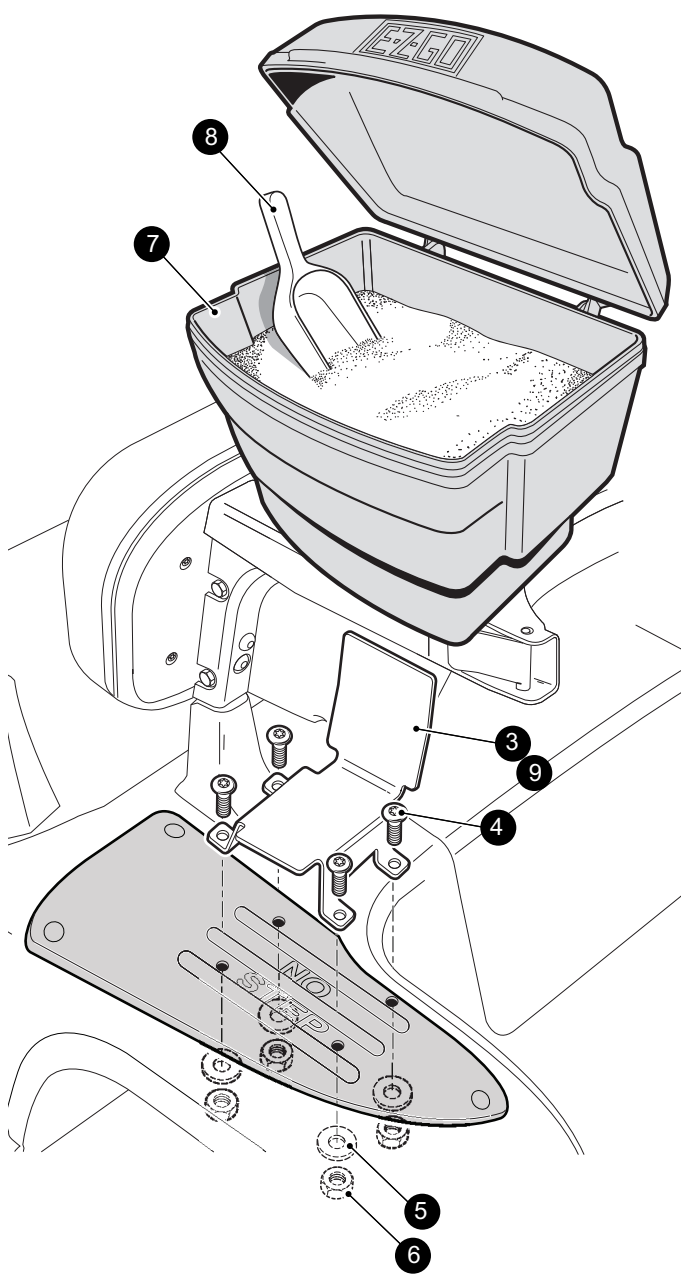
| ITEM | PART NO. | 1 2 3 4 5 | DESCRIPTION   | QTY. |
|------|----------|-----------|---|------|
| 1    | 603846   |           | SIDE BASKET, DRIVER SIDE (use existing hardware).....             | 1    |
| 2    | 603702   |           | SIDE BASKET, PASSENGER SIDE (use existing hardware) .....         | 1    |
| 3    |          |           |   |      |
| 4    |          |           |   |      |
| 5    | 603733   |           | BEVERAGE COOLER KIT, DRIVER SIDE (includes items 7 - 11 .....     | 1    |
| 6    | 604215   |           | BEVERAGE COOLER KIT, PASSENGER SIDE (includes items 8 - 12) ..... | 1    |
| 7    | 603706   |           | MOUNTING BRACKET, DRIVER SIDE .....                               | 1    |
| 8    | 600530   |           | BUTTON HEAD TORX BOLT, M10 - 1.5 X 34.....                        | 4    |
| 9    | 608520   |           | POLYPROPYLENE WASHER.....   | 4    |
| 10   | 600525   |           | LOCKING NUT, M10 - 1.25 .....                                     | 4    |
| 11   | 601366   |           | BEVERAGE COOLER.....  | 1    |
| 12   | 603777   |           | MOUNTING BRACKET, PASSENGER SIDE .....                            | 1    |
| 13   |          |           |   |      |
| 14   |          |           |   |      |
| 15   | 604360   |           | SOFTSWIPE .....   | 1    |
| 16   | 605957   |           | BUTTON HEAD TORX SCREW, THREAD FORMING, M8 .....                  | 1    |
| 17   | 620209   |           | PAN HEAD PHILLIPS SCREW, #10 X 2" .....                           | 1    |
| 18   |          |           |   |      |
| 19   |          |           |   |      |
| 20   | 607104   |           | SAND BOTTLE KIT (includes items 21 - 25) .....                    | 1    |
| 21   | 607102   |           | SAND BOTTLE ASSEMBLY (includes items 22 & 23).....                | 1    |
| 22   | 605961   |           | SAND BOTTLE .....   | 1    |
| 23   | 605962   |           | SAND BOTTLE CAP .....   | 1    |
| 24   | 602572   |           | PAN HEAD TORX SCREW, TAPTITE M10 - 1.5 X 25 .....                 | 1    |
| 25   | 606085   |           | SAND BOTTLE MOUNTING BRACKET .....                                | 1    |

1 Divot Repair Kit, Driver Side  
includes items 3 - 8

2 Divot Repair Kit, Driver Side  
includes items 4 - 9

14 Club & Ball Washer Kit, Driver Side  
includes items 16 - 20

15 Club & Ball Washer Kit, Driver Side  
includes items 17 - 21



When ordering parts, please specify the model and serial number of the product.

\* Indicates a component that is not available as an individual part.

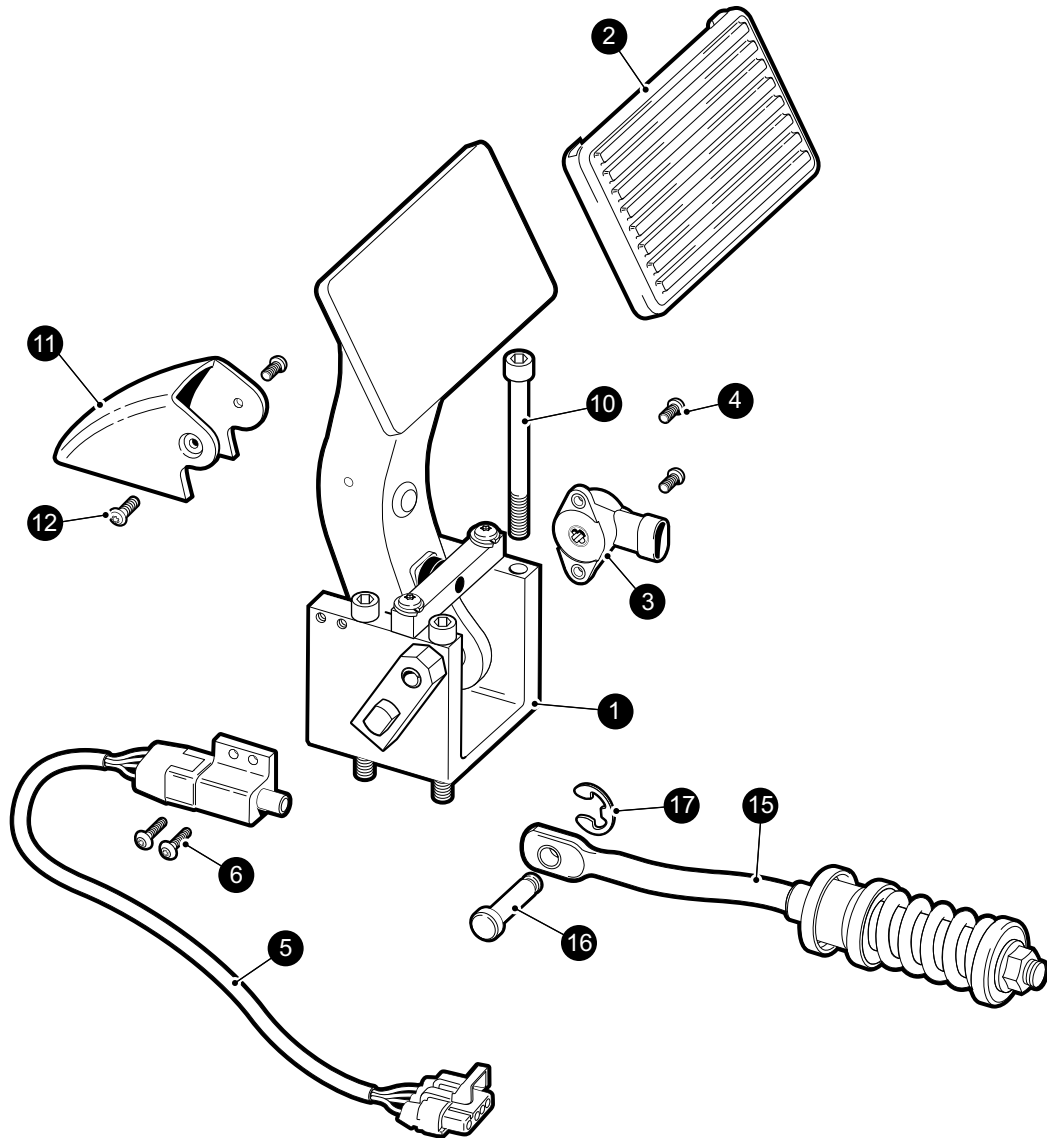
\*\*\* Indicates consult Customer Service Department for additional information.

| ITEM | PART NO. | 1 2 3 4 5 | DESCRIPTION  | QTY. |
|------|----------|-----------|--|------|
| 1    | 604214   |           | DIVOT REPAIR KIT, DRIVER SIDE (includes items 3 - 8) .....         | 1    |
| 2    | 603250   |           | DIVOT REPAIR KIT, PASSENGER SIDE (includes items 4 - 9) .....      | 1    |
| 3    | 603825   |           | MOUNTING BRACKET, DRIVER SIDE .....                                | 1    |
| 4    | 600530   |           | BUTTON HEAD TORX BOLT, M10 - 1.5 X 34.....                         | 4    |
| 5    | 608520   |           | POLYPROPYLENE WASHER.....  | 4    |
| 6    | 600525   |           | LOCKING NUT, M10 - 1.25 .....                                      | 4    |
| 7    | 601365   |           | DIVOT REPAIR BUCKET .....  | 1    |
| 8    | 604642   |           | SCOOP.....   | 1    |
| 9    | 603824   |           | MOUNTING BRACKET, PASSENGER SIDE .....                             | 1    |
| 10   |          |           |  |      |
| 11   |          |           |  |      |
| 12   |          |           |  |      |
| 13   |          |           |  |      |
| 14   | 604216   |           | CLUB & BALL WASHER KIT, DRIVER SIDE (includes items 16 - 20) ..... | 1    |
| 15   | 603252   |           | CLUB & BALL WASHER KIT, PASSENGER SIDE (includes items 17 - 21)... | 1    |
| 16   | 604577   |           | MOUNTING BRACKET, DRIVER SIDE .....                                | 1    |
| 17   | 600530   |           | BUTTON HEAD TORX BOLT, M10 - 1.5 X 25.....                         | 4    |
| 18   | 608520   |           | POLYPROPYLENE WASHER.....  | 4    |
| 19   | 600525   |           | LOCKING NUT, M10 - 1.25 .....                                      | 8    |
| 20   | 603836   |           | CLUB & BALL WASHER .....   | 1    |
| 21   | 604576   |           | MOUNTING BRACKET, PASSENGER SIDE .....                             | 1    |
| 22   | 608020   |           | HEX HEAD BOLT, M10 - 1.25 X 34 .....                               | 4    |





# BRAKES



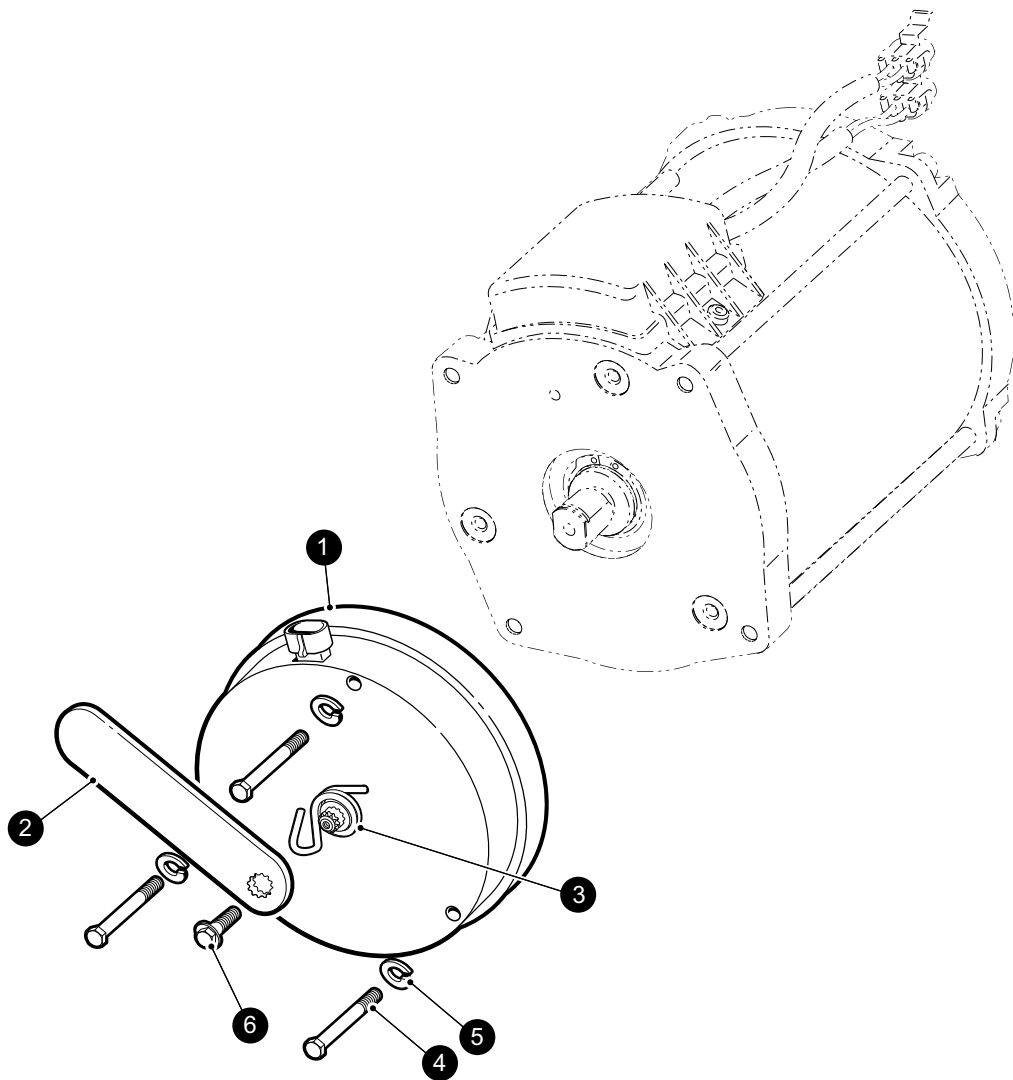


When ordering parts, please specify the model and serial number of the product.

\* Indicates a component that is not available as an individual part.

\*\*\* Indicates consult Customer Service Department for additional information.

| ITEM | PART NO. | 1 2 3 4 5 | DESCRIPTION  | QTY. |
|------|----------|-----------|--|------|
| 1    | 604689   |           | BRAKE PEDAL ASSEMBLY (electric), (includes items 2 - 6)..... | 1    |
| 2    | 600252   |           | BRAKE PEDAL PAD .....  | 1    |
| 3    | 600019   |           | ROTARY POSITION SENSOR.....                                  | 1    |
| 4    | 600543   |           | BUTTON HEAD TORX BOLT, M4 - 7 X 13.....                      | 2    |
| 5    | 607605   |           | BRAKE PEDAL SWITCH .....                                     | 1    |
| 6    | 620030   |           | SOCKET HEAD CAP SCREW, M5 - 0.8 -6g X 10 .....               | 2    |
| 7    |          |           |  |      |
| 8    |          |           |  |      |
| 9    |          |           |  |      |
| 10   | 605254   |           | SOCKET HEAD CAP SCREW M8 - 1.25 X 90 .....                   | 4    |
| 11   | 605688   |           | BRAKE PEDAL COVER .....                                      | 1    |
| 12   | 600543   |           | BUTTON HEAD TORX BOLT, M4 - 0.7 X 12 .....                   | 2    |
| 13   |          |           |  |      |
| 14   |          |           |  |      |
| 15   | 605266   |           | BRAKE PEDAL RETURN SPRING .....                              | 1    |
| 16   | 601894   |           | CLEVIS PIN .....   | 1    |
| 17   | 601835   |           | E-RING, 8mm .....  | 1    |



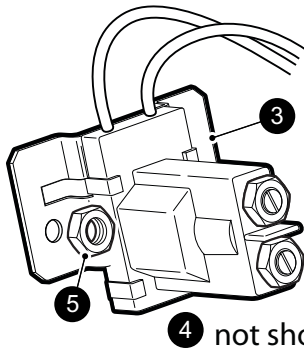
When ordering parts, please specify the model and serial number of the product.

\* Indicates a component that is not available as an individual part.

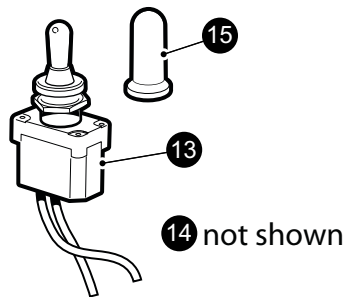
\*\*\* Indicates consult Customer Service Department for additional information.

| ITEM | PART NO. | 1 2 3 4 5 | DESCRIPTION   | QTY. |
|------|----------|-----------|---|------|
| 1    | 605867   |           | 6" MOTOR BRAKE ASSEMBLY (includes items 2 - 6)..... | 1    |
| 2    | 605924   |           | BRAKE HANDLE .....                                  | 1    |
| 3    | 607737   |           | BRAKE HANDLE RETURN SPRING .....                    | 1    |
| 4    | 73715G01 |           | FLANGED HEX HEAD SCREW, M6 - 1 X 60 .....           | 3    |
| 5    | 00664-G7 |           | LOCK WASHER, STAINLESS STEEL, 1/4" .....            | 3    |
| 6    | *        |           | FLANGED HEX HEAD BOLT, M6 - 1 X 10 .....            | 1    |

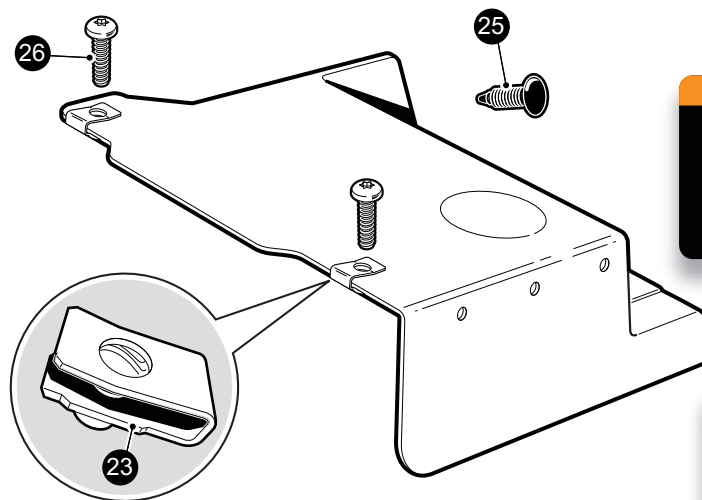
- 1** Main Electrical Harness (not shown)  
(includes items 3, 8, 13, 15 & 18)



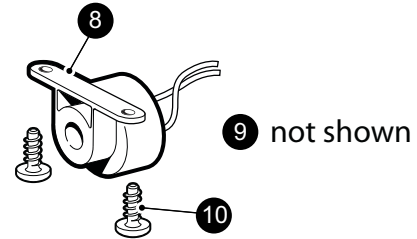
- 2** Solenoid Replacement Kit  
(includes items 3 & 4)



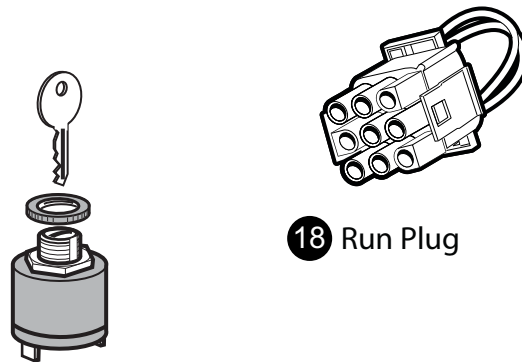
- 12** Run Tow Switch Replacement Kit  
(includes items 13 - 15)



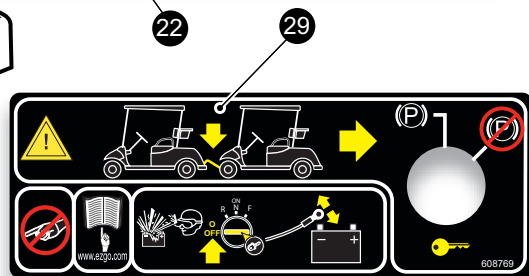
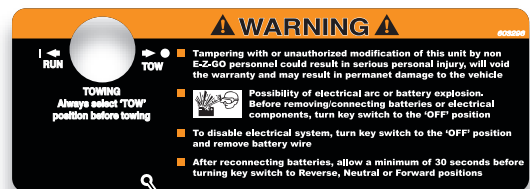
- 21** Controller Splash Shield Assembly  
(includes items 22 & 23)



- 7** Reverse Warning Indicator Replacement Kit  
(includes items 8, 9 & 10)



- 28** CE Run Tow Switch with Key

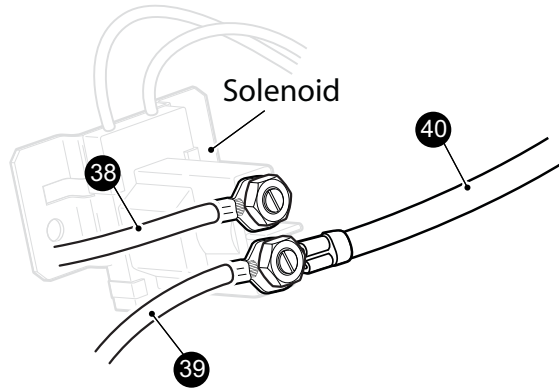
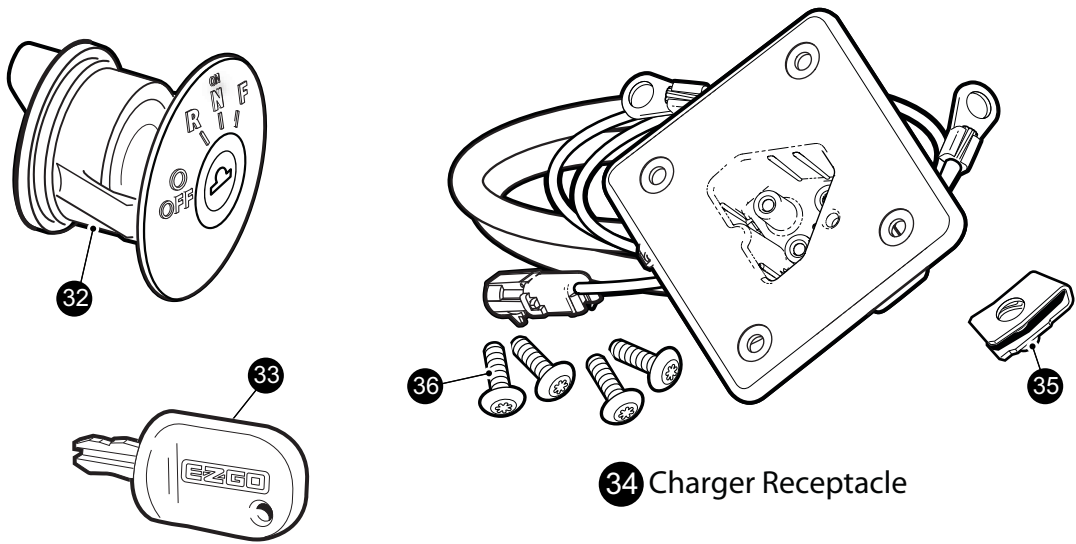


When ordering parts, please specify the model and serial number of the product.

\* Indicates a component that is not available as an individual part.

\*\*\* Indicates consult Customer Service Department for additional information.

| ITEM | PART NO. | 1 2 3 4 5 | DESCRIPTION   | QTY. |
|------|----------|-----------|---|------|
| 1    | 601969   |           | MAIN ELECTRICAL HARNESS, 48V (includes items 3, 8 , 13, 15 & 18)..... | 1    |
| 2    | 608897   |           | SOLENOID REPLACEMENT KIT (includes items 3 & 4).....                  | 1    |
| 3    | 606971   |           | SOLENOID.....   | 1    |
| 4    | 608896   |           | WATERPROOF BUTT SPLICE.....   | 2    |
| 5    | 601476   |           | LOCK NUT, M6 - 1 .....  | 2    |
| 6    |          |           |   |      |
| 7    | 608899   |           | REVERSE WARNING INDICATOR REPLACEMENT KIT (inc items 8 - 10)          | 1    |
| 8    | 608882   |           | REVERSE WARNING INDICATOR .....                                       | 1    |
| 9    | 608896   |           | WATERPROOF BUTT SPLICE.....   | 2    |
| 10   | 01051-G1 |           | PAN HEAD PHILLIPS SCREW, #8 - 16.....                                 | 2    |
| 11   |          |           |   |      |
| 12   | 608900   |           | RUN/TOW SWITCH REPLACEMENT KIT (includes items 13 - 15) .....         | 1    |
| 13   | 606980   |           | RUN TOW SWITCH.....   | 1    |
| 14   | 608896   |           | WATERPROOF BUTT SPLICE.....   | 2    |
| 15   | 605969   |           | RUBBER BOOT .....   | 1    |
| 16   |          |           |   |      |
| 17   |          |           |   |      |
| 18   | 608039   |           | RUN PLUG .....  | 1    |
| 19   |          |           |   |      |
| 20   |          |           |   |      |
| 21   | 605965   |           | CONTROLLER SPLASH SHIELD ASSEMBLY (includes items 22 & 23).....       | 1    |
| 22   | 603296   |           | RUN/TOW WARNING DECAL .....   | 1    |
| 23   | 602409   |           | BARREL CLIP, M6 - 1 .....   | 2    |
| 24   |          |           |   |      |
| 25   | 16816-G1 |           | CHRISTMAS TREE RIVET.....   | 1    |
| 26   | 601326   |           | BUTTON HEAD TORX BOLT, M6-1 X 20 .....                                | 2    |
| 27   |          |           |   |      |
| 28   | 608810   |           | CE RUN TOW SWITCH WITH KEY .....                                      | 1    |
| 29   | 608769   |           | CE RUN/TOW WARNING DECAL.....   | 1    |
| 30   |          |           |   |      |
| 31   |          |           |   |      |

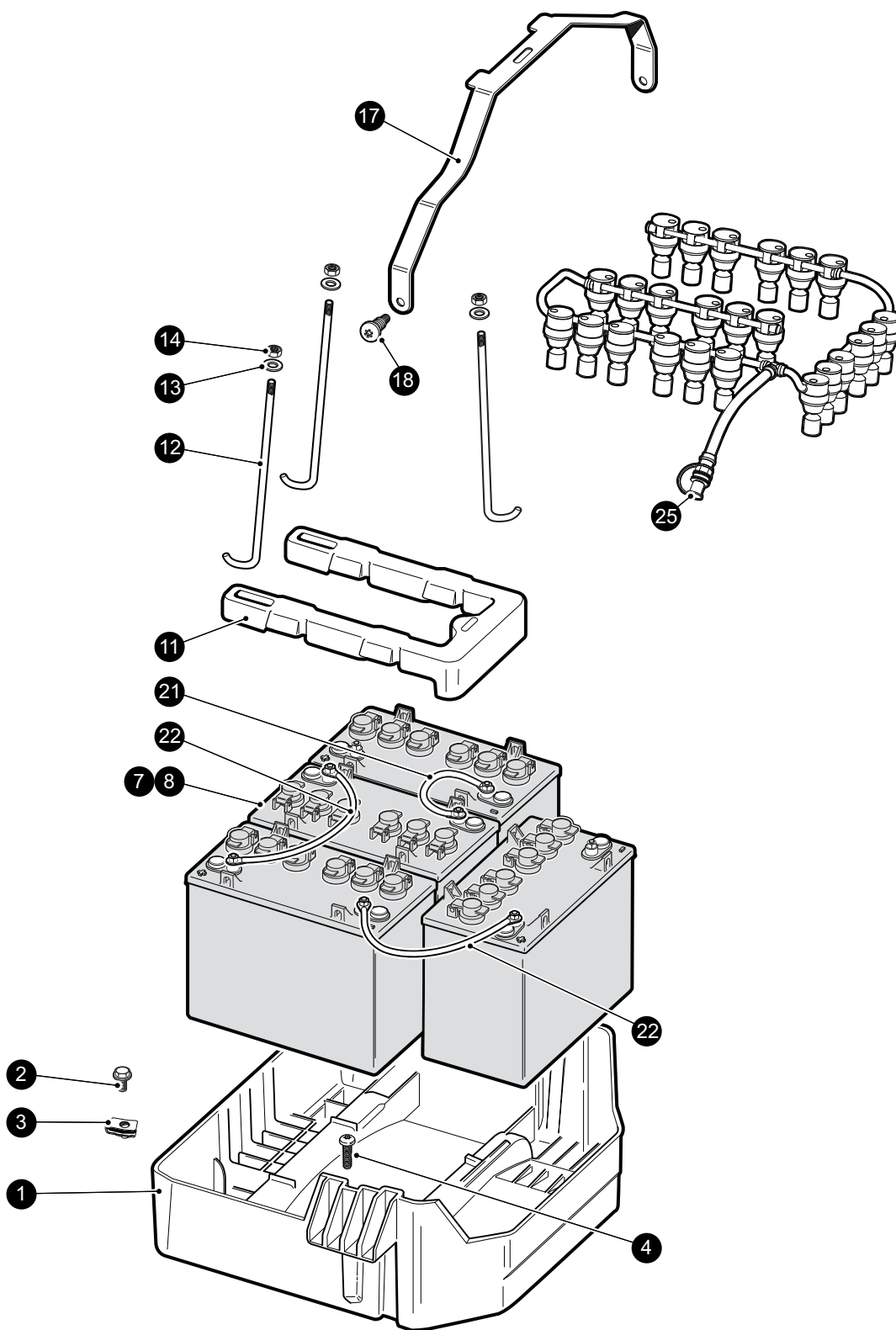


When ordering parts, please specify the model and serial number of the product.

\* Indicates a component that is not available as an individual part.

\*\*\* Indicates consult Customer Service Department for additional information.

| ITEM | PART NO. | 1 2 3 4 5 | DESCRIPTION                              | QTY. |
|------|----------|-----------|--|------|
| 32   | 605637   |           | KEY SWITCH, R-N-F .....                  | 1    |
| 33   | 605946   |           | KEY .....                                | 1    |
| 34   | 602529   |           | CHARGER RECEPTACLE, 48V DELTA-Q .....    | 1    |
| 35   | 602409   |           | BARREL CLIP, M6 - 1 .....                | 1    |
| 36   | 601326   |           | BUTTON HEAD TORX BOLT, M6-1 X 20 .....   | 4    |
| 37   |          |           |  |      |
| 38   | 603022   |           | RED WIRE ASSEMBLY, 6 AWG X 687mm.....    | 1    |
| 39   | 603021   |           | RED WIRE ASSEMBLY, 6 AWG X 220mm.....    | 1    |
| 40   | 607707   |           | WHITE WIRE ASSEMBLY, 10 AWG X 250mm..... | 1    |



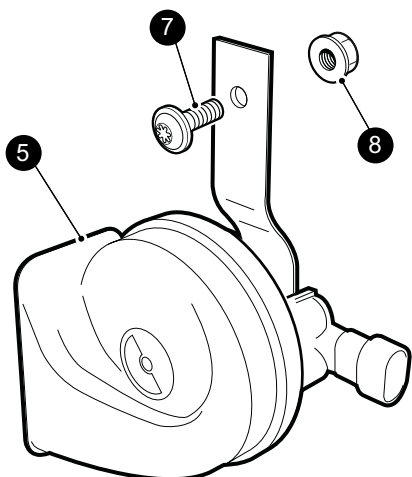


When ordering parts, please specify the model and serial number of the product.

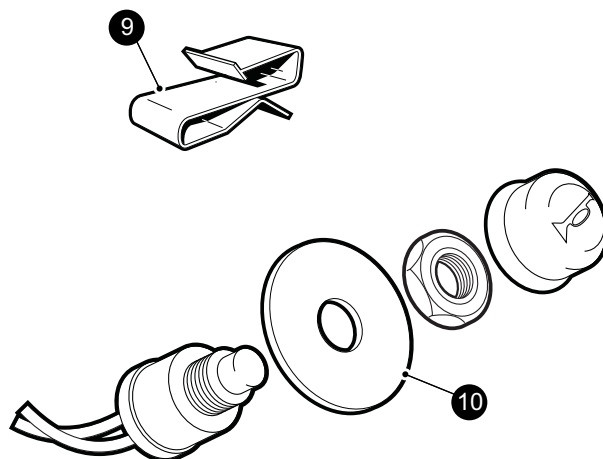
\* Indicates a component that is not available as an individual part.

\*\*\* Indicates consult Customer Service Department for additional information.

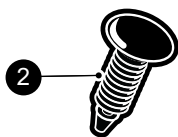
| ITEM | PART NO. | 1 2 3 4 5 | DESCRIPTION   | QTY. |
|------|----------|-----------|---|------|
| 1    | 603064   |           | PLASTIC BATTERY TRAY .....  | 1    |
| 2    | 603799   |           | FLANGED HEX HEAD BOLT, M10 - 1.5 X 25 .....                       | 2    |
| 3    | 603818   |           | BARREL CLIP, M10 - 1.5 .....                                      | 2    |
| 4    | 602572   |           | PAN HEAD TORX BOLT, M10 - 1.5 X 25.....                           | 2    |
| 5    |          |           |   |      |
| 6    |          |           |   |      |
| 7    | 602523   |           | 12V 140AMP TROJAN BATTERY .....                                   | 1    |
| 8    | 607906   |           | 12V 175AMP TROJAN BATTERY .....                                   | 1    |
| 9    |          |           |   |      |
| 10   |          |           |   |      |
| 11   | 601695   |           | BATTERY HOLD DOWN .....   | 1    |
| 12   | 602896   |           | BATTERY HOLD DOWN ROD .....                                       | 3    |
| 13   | 00571-G2 |           | FLAT WASHER, .38 I.D. X .88 O.D. X .08 THK .....                  | 3    |
| 14   | 11098-G6 |           | LOCK NUT, 5/16 - 18 .....   | 3    |
| 15   |          |           |   |      |
| 16   |          |           |   |      |
| 17   | 608315   |           | BATTERY STRAP .....   | 1    |
| 18   | 602572   |           | PAN HEAD TORX BOLT, M10 - 1.5 X 25.....                           | 2    |
| 19   |          |           |   |      |
| 20   |          |           |   |      |
| 21   | 602930   |           | BLUE WIRE ASSEMBLY, 6 GA X 261 mm .....                           | 1    |
| 22   | 607057   |           | BLUE WIRE ASSEMBLY, 6 GA X 325 mm .....                           | 2    |
| 23   |          |           |   |      |
| 24   |          |           |   |      |
| 25   | 609216   |           | BATTERY FILL SYSTEM.....  | 1    |
| 26   | 608813   |           | NOZZLE GUN .....  | 1    |
| 27   | 609540   |           | NOZZLE GUN ADAPTER (to adapt older fill systems to new gun) ..... | 1    |



**4** Horn Assembly Kit  
(includes items 5 - 10)

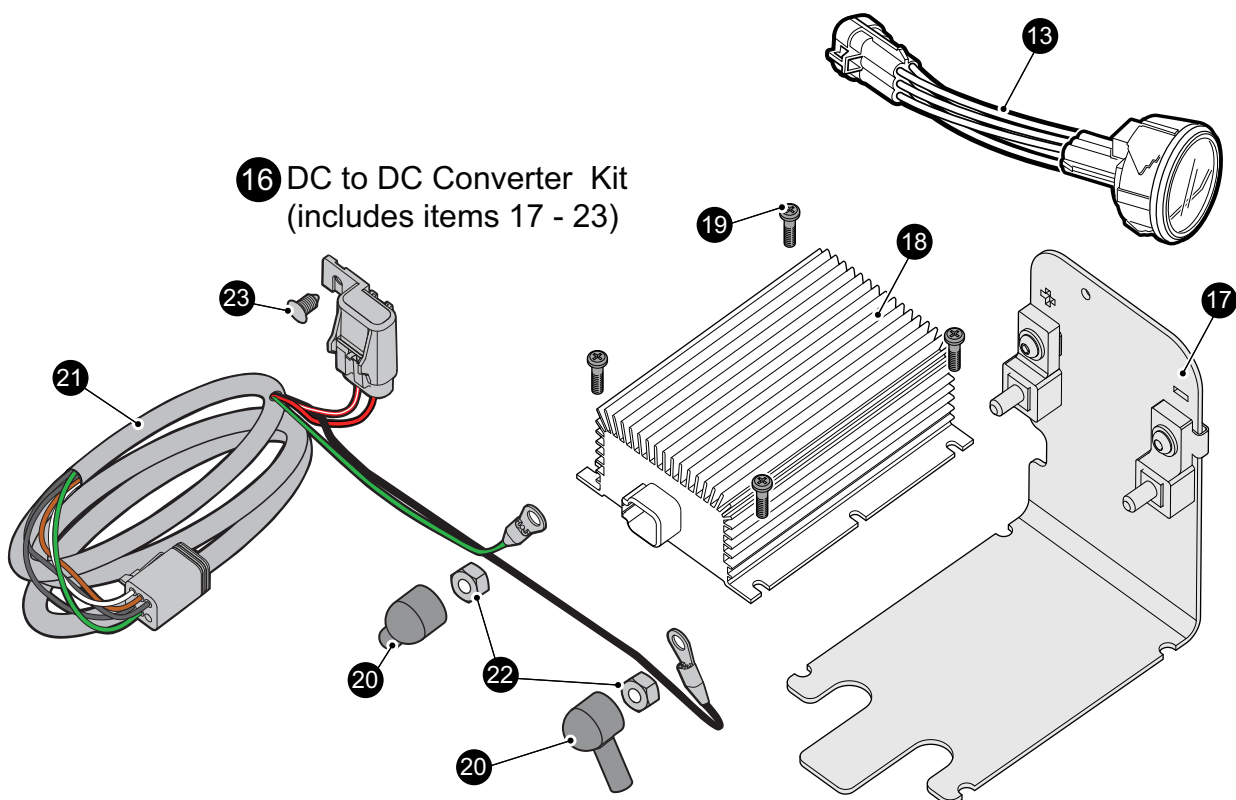


**6** Horn Button Switch Assembly



2

**16** DC to DC Converter Kit  
(includes items 17 - 23)

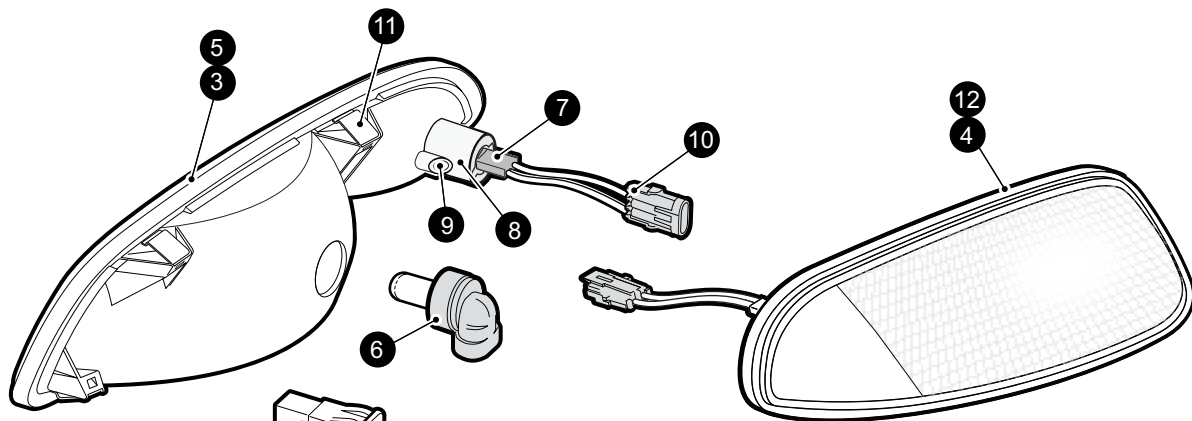


When ordering parts, please specify the model and serial number of the product.

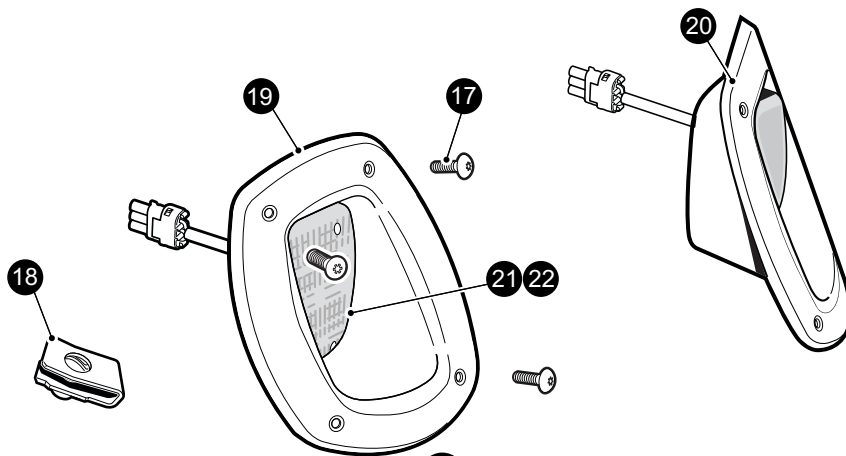
\* Indicates a component that is not available as an individual part.

\*\*\* Indicates consult Customer Service Department for additional information.

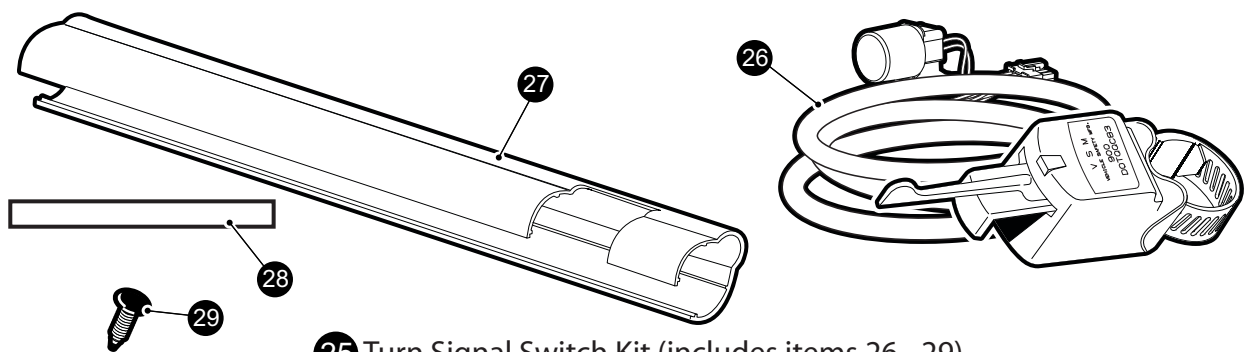
| ITEM | PART NO.  | 1 2 3 4 5 | DESCRIPTION   | QTY. |
|------|-----------|-----------|---|------|
| 1    | 604221    |           | ACCESSORY HARNESS, ELECTRIC VEHICLE .....             | 1    |
| 2    | 16816-G2  |           | CHRISTMAS TREE RIVET, .25 DIA X .88.....              | 1    |
| 3    |           |           |   |      |
| 4    | 607528    |           | HORN ASSEMBLY KIT (includes items 5 -10) .....        | 1    |
| 5    | 604196    |           | HORN ASSEMBLY .....                                   | 1    |
| 6    | 604193    |           | HORN BUTTON SWITCH ASSEMBLY .....                     | 1    |
| 7    | 601326    |           | BUTTON HEAD TORX BOLT, M6 - 1 X 20.....               | 1    |
| 8    | 601476    |           | LOCK NUT, M6 - 1.....                                 | 1    |
| 9    | 01072-G01 |           | CABLE CLIP .....                                      | 3    |
| 10   | 608397    |           | HORN PLATE .....                                      | 1    |
| 11   |           |           |   |      |
| 12   |           |           |   |      |
| 13   | 604015    |           | STATE OF CHARGE METER .....                           | 1    |
| 14   |           |           |   |      |
| 15   |           |           |   |      |
| 16   | 608788    |           | DC TO DC CONVERTER KIT (includes items 17 - 23) ..... | 1    |
| 17   | 608199    |           | MOUNTING BRACKET .....                                | 1    |
| 18   | 604884    |           | DC TO DC CONVERTER.....                               | 1    |
| 19   | 608290    |           | PHILLIPS HEAD TAPPING SCREW, #10-16 X .75.....        | 4    |
| 20   | 25682G01  |           | RUBBER BOOT .....                                     | 2    |
| 21   | 608182    |           | DC TO DC WIRING HARNESS.....                          | 1    |
| 22   | 00702G2   |           | HEX NUT, 5/16-18 .....                                | 2    |
| 23   | 16816G5   |           | CHRISTMAS TREE RIVET, .187 DIA X .55 .....            | 1    |



- 1 [Image]
- 2 Headlight Kit (includes items 2 - 12)
- 3 Headlight Assembly, Driver Side (includes items 4 - 11)
- 4 Headlight Assembly, Passenger Side (includes items 5 - 12)



- 15 Tail Light Kit (includes items 16 - 22)
- 16 Tail Light Hardware Kit (includes items 17 & 18)
- 19 Tail Light Assembly, Driver Side (includes items 21 & 22)
- 20 Tail Light Assembly, Passenger Side (includes items 21 & 22)



- 25 Turn Signal Switch Kit (includes items 26 - 29)

When ordering parts, please specify the model and serial number of the product.

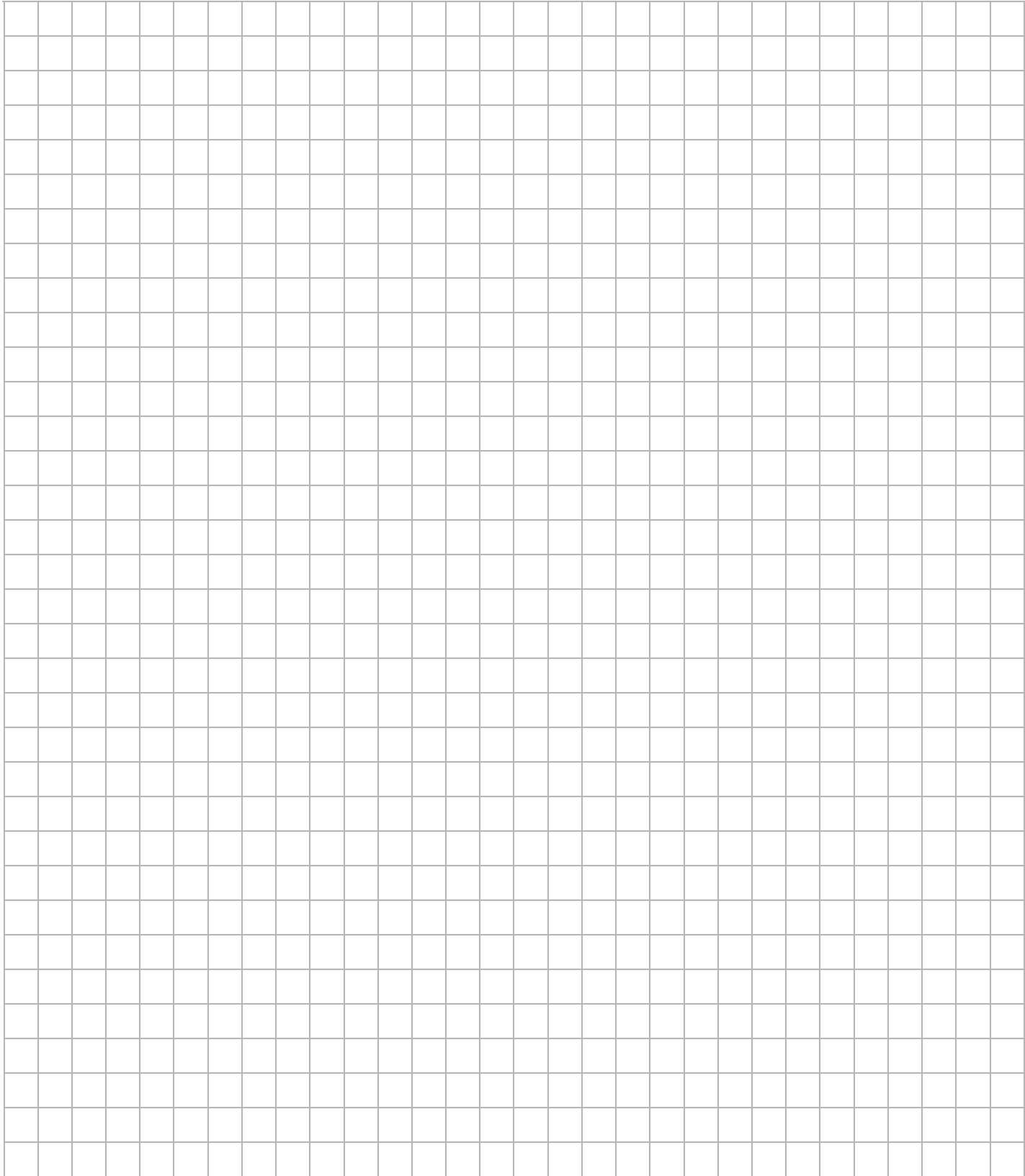
\* Indicates a component that is not available as an individual part.

\*\*\* Indicates consult Customer Service Department for additional information.

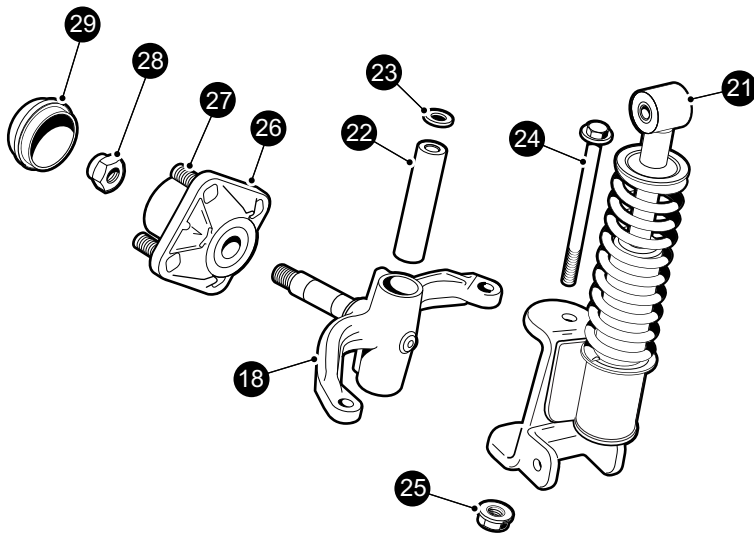
| ITEM | PART NO.  | 1 2 3 4 5 | DESCRIPTION  | QTY. |
|------|-----------|-----------|--|------|
| 1    | 604019    |           | HEADLIGHT SWTICH .....   | 1    |
| 2    | 607445    |           | HEADLIGHT KIT (includes items 2 - 12).....                     | 1    |
| 3    | 607439    |           | HEADLIGHT ASSEMBLY, DRIVER SIDE (includes items 5 - 11 .....   | 1    |
| 4    | 607438    |           | HEADLIGHT ASSEMBLY, PASSENGER SIDE (includes items 6 - 12..... | 1    |
| 5    | 604452    |           | GASKET, DRIVER SIDE .....                                      | 1    |
| 6    | 74004-G01 |           | HEADLIGHT BULB .....   | 1    |
| 7    | 604539    |           | TURN SIGNAL BULB.....  | 1    |
| 8    | 608322    |           | BULB RETAINER.....   | 1    |
| 9    | 608328    |           | BUTTON HEAD TORX SCREW, PLASTITE .....                         | 1    |
| 10   | 607487    |           | TURN SIGNAL WIRE HARNESS .....                                 | 1    |
| 11   | 607434    |           | HEADLIGHT RETAINING CLIP .....                                 | 4    |
| 12   | 607437    |           | GASKET, PASSENGER SIDE .....                                   | 1    |
| 13   |           |           |  |      |
| 14   |           |           |  |      |
| 15   | 607450    |           | TAIL LIGHT KIT (includes items 16 - 22) .....                  | 1    |
| 16   | 607474    |           | TAIL LIGHT HARDWARE KIT (INCLUDES ITEMS 17 & 18) .....         | 1    |
| 17   | 601326    |           | BUTTON HEAD TORX BOLT, M6 - 1 X 20 .....                       | 8    |
| 18   | 602409    |           | BARRELL CLIP, M6 .....   | 8    |
| 19   | 603325    |           | TAIL LIGHT ASSEMBLY, DRIVER SIDE (includes items 21 & 22.....  | 1    |
| 20   | 603326    |           | TAIL LIGHT ASSEMBLY, PASSENGER SIDE (includes items 21 & 22).. | 1    |
| 21   | 604311    |           | TAIL LIGHT BULB.....   | 1    |
| 22   | 604858    |           | TAIL LIGHT LENS.....   | 1    |
| 23   |           |           |  |      |
| 24   |           |           |  |      |
| 25   | 607530    |           | TURN SIGNAL SWITCH KIT (includes items 26 & 29).....           | 1    |
| 26   | 604511    |           | TURN SIGNAL SWITCH ASSEMBLY .....                              | 1    |
| 27   | 60965-G3  |           | STEERING COLUMN COVER .....                                    | 1    |
| 28   | 608771    |           | RUBBER ISOLATION STRIP .....                                   | 1    |
| 29   | 16816-G5  |           | CHRISTMAS TREE RIVET, .18 X .55 .....                          | 2    |



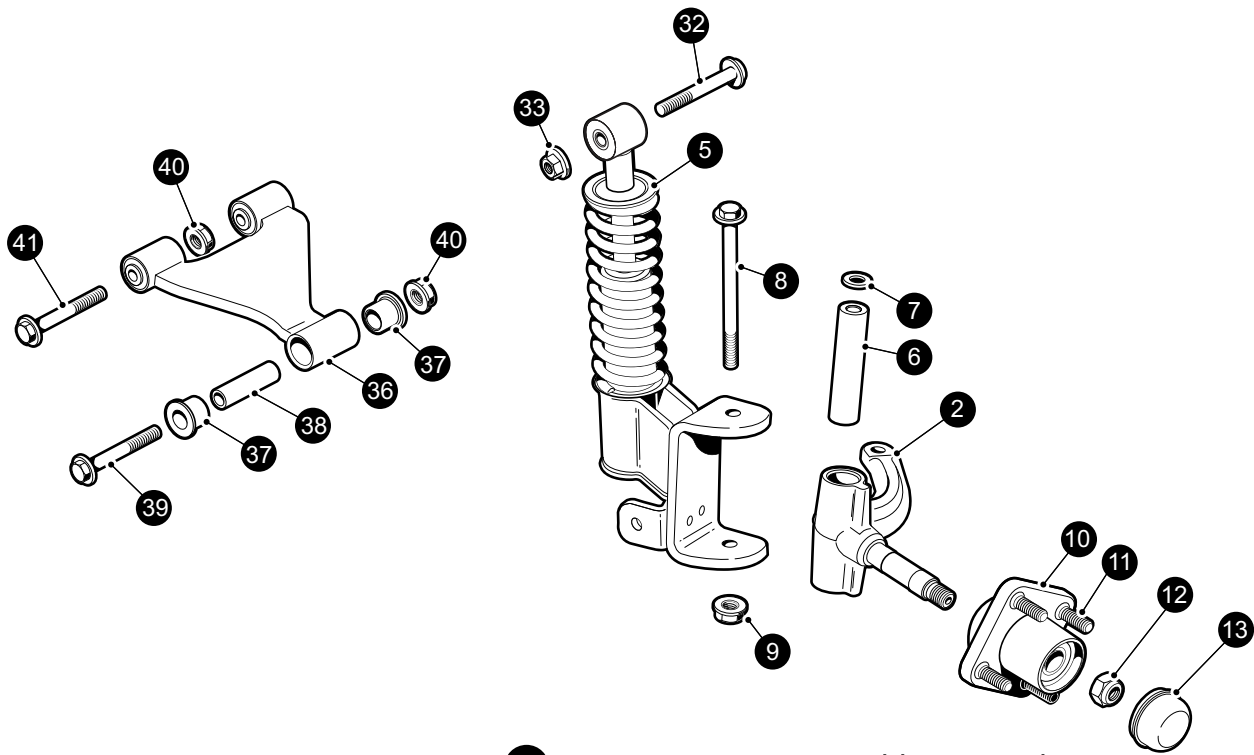
**Notes:**

A large grid of graph paper for taking notes, consisting of 20 columns and 30 rows of small squares.

# FRONT SUSPENSION



**17** Front Suspension Assembly Passenger Side  
includes items 18, 21 - 29



**1** Front Suspension Assembly Driver Side  
includes items 2, 5 - 13



# FRONT SUSPENSION

When ordering parts, please specify the model and serial number of the product.

\* Indicates a component that is not available as an individual part.

\*\*\* Indicates consult Customer Service Department for additional information.

| ITEM | PART NO. | 1 2 3 4 5 | DESCRIPTION  | QTY. |
|------|----------|-----------|--|------|
| 1    | 609605   |           | SHOCK ABSORBER ASSEMBLY, DRIVER SIDE (includes items 2 - 13) ..... | 1    |
| 2    | 607413   |           | SPINDLE ASSEMBLY, DRIVER SIDE.....                                 | 1    |
| 3    |          |           |  |      |
| 4    |          |           |  |      |
| 5    | 601246   |           | STRUT ASSEMBLY, DRIVER SIDE .....                                  | 1    |
| 6    | 601707   |           | KINGPIN TUBE .....   | 1    |
| 7    | 601920   |           | THRUST WASHER .....  | 1    |
| 8    | 620380   |           | KINGPIN, HEX HEAD FLANGED BOLT, M12 - 1.25 X 145 .....             | 1    |
| 9    | 600549   |           | HEX NUT, FLANGED, M12 - 1.25 .....                                 | 1    |
| 10   | 609603   |           | HUB ASSEMBLY (includes item 11).....                               | 1    |
| 11   | 19862G1  |           | WHEEL STUD.....  | 4    |
| 12   | 601709   |           | LOCKING HEX NUT, M16 - 2.....                                      | 1    |
| 13   | 12091G3  |           | SPINDLE CAP.....   | 1    |
| 14   |          |           |  |      |
| 15   |          |           |  |      |
| 16   |          |           |  |      |
| 17   | 609604   |           | SHOCK ABSORBER ASSEMBLY, PASSENGER SIDE (inc items 18 - 29) ...    | 1    |
| 18   | 607411   |           | SPINDLE ASSEMBLY, PASSENGER SIDE .....                             | 1    |
| 19   |          |           |  |      |
| 20   |          |           |  |      |
| 21   | 603024   |           | STRUT ASSEMBLY, PASSENGER SIDE .....                               | 1    |
| 22   | 601707   |           | KINGPIN TUBE .....   | 1    |
| 23   | 601920   |           | THRUST WASHER .....  | 1    |
| 24   | 620380   |           | KINGPIN, HEX HEAD FLANGED BOLT, M12 - 1.25 X 145 .....             | 1    |
| 25   | 600549   |           | HEX NUT, FLANGED, M12 - 1.25 .....                                 | 1    |
| 26   | 609603   |           | HUB ASSEMBLY (includes item 27).....                               | 1    |
| 27   | 19862G1  |           | WHEEL STUD.....  | 4    |
| 28   | 601709   |           | LOCKING HEX NUT, M16 - 2.....                                      | 1    |
| 29   | 12091G3  |           | SPINDLE CAP.....   | 1    |
| 30   |          |           |  |      |
| 31   |          |           |  |      |

# FRONT SUSPENSION

When ordering parts, please specify the model and serial number of the product.

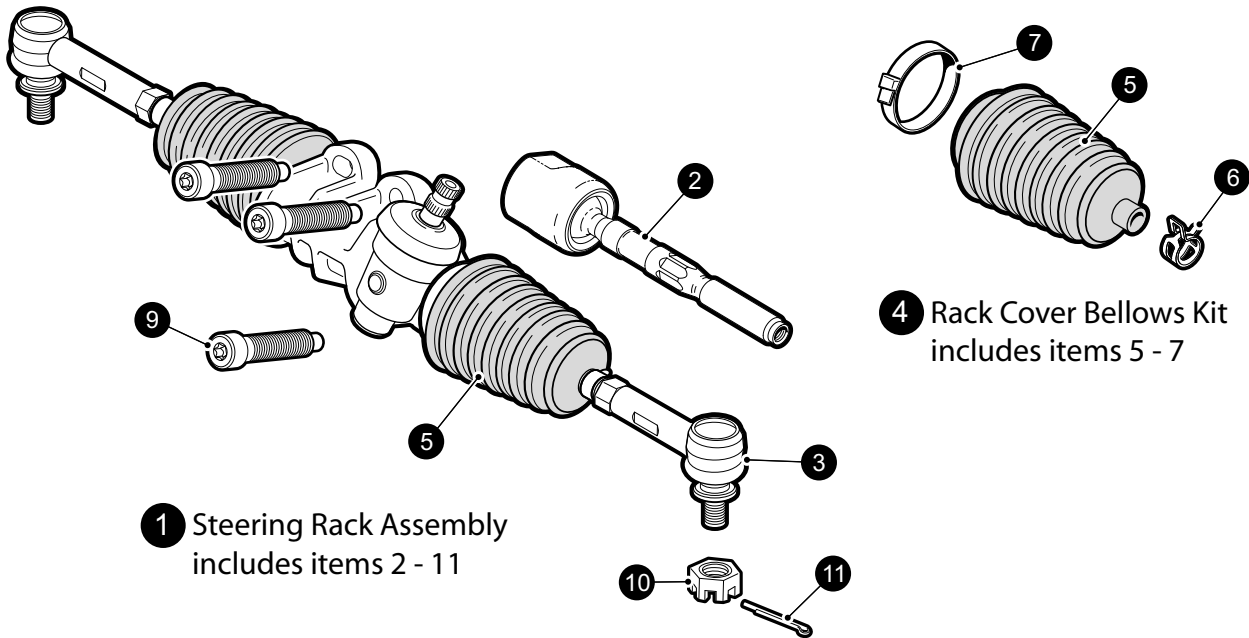
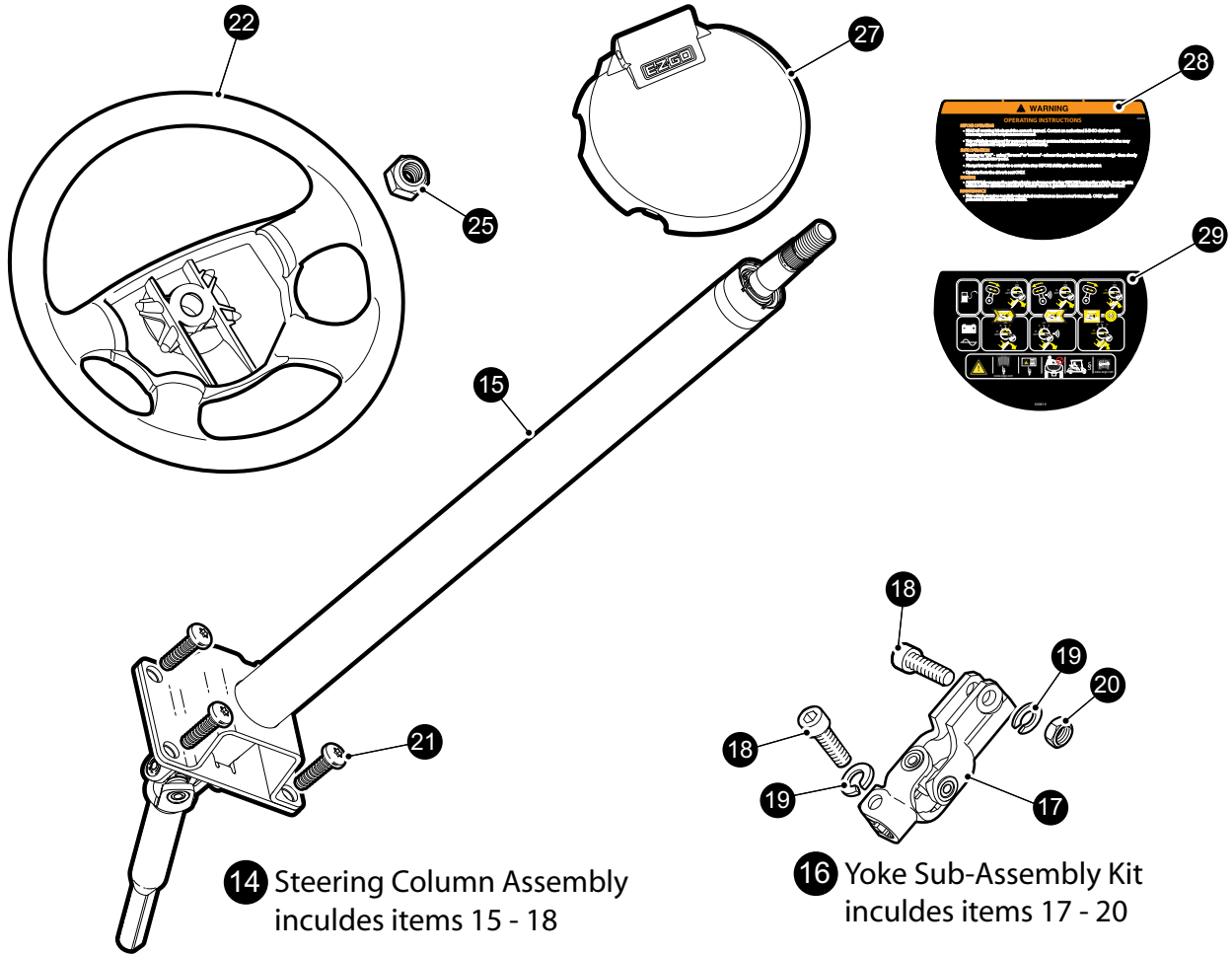
\* Indicates a component that is not available as an individual part.

\*\*\* Indicates consult Customer Service Department for additional information.

| ITEM | PART NO. | 1 2 3 4 5 | DESCRIPTION                                | QTY. |
|------|----------|-----------|--|------|
| 32   | 602415   |           | HEX HEAD FLANGED BOLT, M10 - 1.5 X 80..... | 2    |
| 33   | 600525   |           | HEX NUT, FLANGED LOCK, M10 - 1.5 .....     | 2    |
| 34   |          |           |  |      |
| 35   |          |           |  |      |
| 36   | 608089   |           | A-ARM ASSEMBLY .....                       | 2    |
| 37   | 601340   |           | A-ARM BUSHING.....                         | 4    |
| 38   | 602085   |           | A-ARM CARRIER TUBE .....                   | 2    |
| 39   | 601754   |           | HEX HEAD FLANGED BOLT, M10 - 1.5 X 90..... | 2    |
| 40   | 600525   |           | HEX NUT, FLANGED LOCK, M10 - 1.5 .....     | 6    |
| 41   | 602415   |           | HEX HEAD FLANGED BOLT, M10 - 1.5 X 80..... | 4    |



# FRONT SUSPENSION



# FRONT SUSPENSION

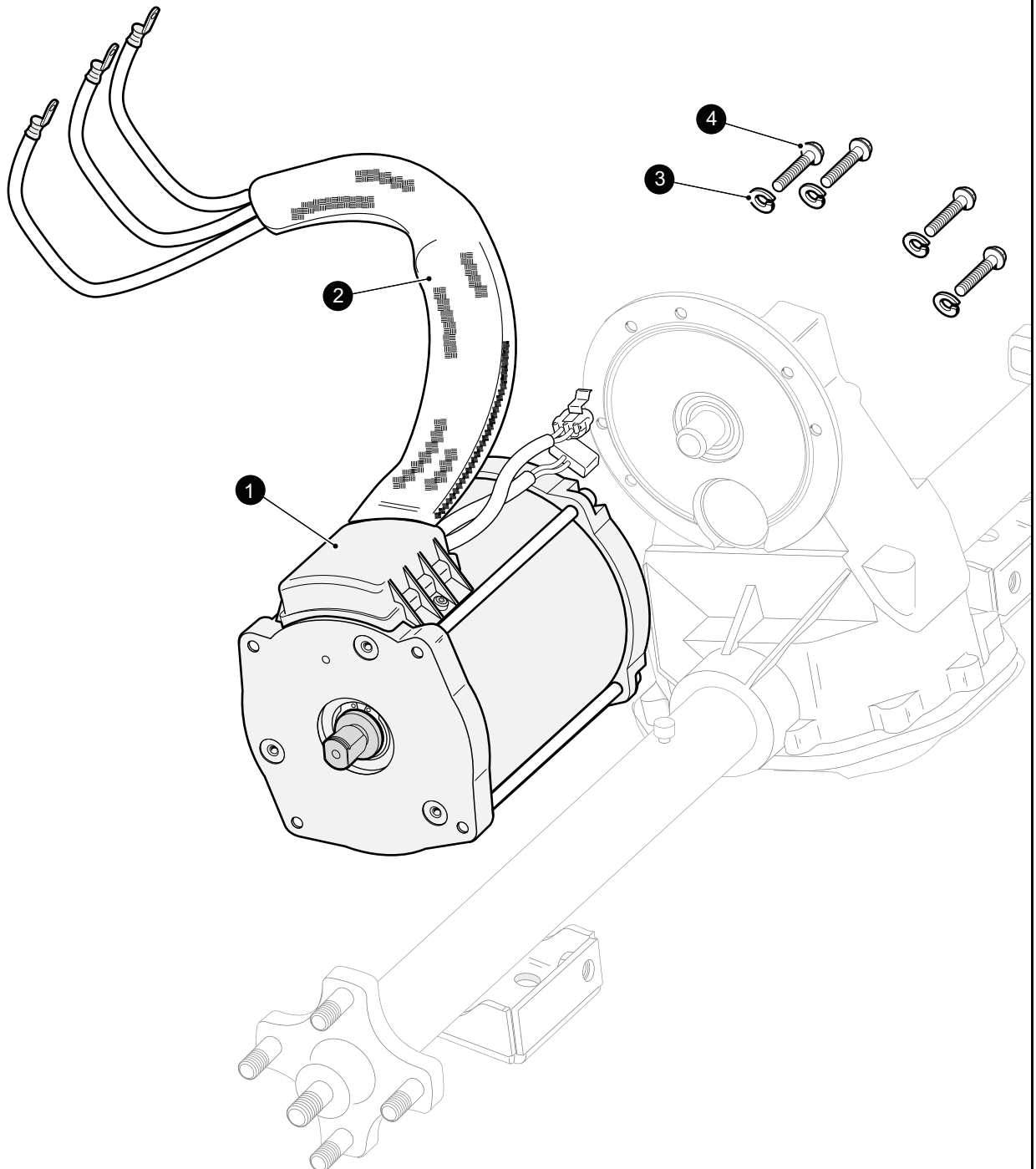
When ordering parts, please specify the model and serial number of the product.

\* Indicates a component that is not available as an individual part.

\*\*\* Indicates consult Customer Service Department for additional information.

| ITEM | PART NO. | 1 2 3 4 5 | DESCRIPTION  | QTY. |
|------|----------|-----------|--|------|
| 1    | 601500   |           | STEERING RACK ASSEMBLY (includes items 2 - 4) .....    | 1    |
| 2    | 603865   |           | STEERING ROD .....                                     | 2    |
| 3    | 604614   |           | ROD END .....  | 2    |
| 4    | 604615   |           | RACK COVER BELLOWS KIT (includes items 5 - 7) .....    | 2    |
| 5    | 608112   |           | BELLOWS.....   | 1    |
| 6    | 608108   |           | BELLOWS CLAMP (small end).....                         | 1    |
| 7    | 608109   |           | BELLOWS CLIP (large end) .....                         | 1    |
| 8    |          |           |  |      |
| 9    | 602020   |           | TORX SOCKET HEAD CAP SCREW, M10 - 1.5 X 80.....        | 3    |
| 10   | 608005   |           | CASTLE HEX NUT, M12 - 1.25 .....                       | 2    |
| 11   | 10387-G2 |           | COTTER PIN.....  | 2    |
| 12   |          |           |  |      |
| 13   |          |           |  |      |
| 14   | 600333   |           | STEERING COLUMN ASSEMBLY (includes items 15 - 18)..... | 1    |
| 15   | 608117   |           | STEERING COLUMN SUB ASSEMBLY .....                     | 1    |
| 16   | 604613   |           | YOKE SUB ASSEMBLY KIT (includes items 17 & 18).....    | 1    |
| 17   | 608114   |           | STEERING YOKE .....                                    | 1    |
| 18   | 608653   |           | SOCKET HEAD BOLT, M10 - 1.5 X 35 .....                 | 2    |
| 19   | 608654   |           | LOCK WASHER, M10.5.....                                | 2    |
| 20   | 608655   |           | HEX NUT, M10 - 1.5.....                                | 1    |
| 21   | 602572   |           | PAN HEAD TORX SCREW, TAPTITE M10 - 1.5 X 25.....       | 4    |
| 22   | 602980   |           | STEERING WHEEL .....                                   | 1    |
| 23   |          |           |  |      |
| 24   |          |           |  |      |
| 25   | 601709   |           | LOCK NUT, M16 - 2 .....                                | 1    |
| 26   |          |           |  |      |
| 27   | 607925   |           | SCORECARD HOLDER ASSEMBLY .....                        | 1    |
| 28   | 608529   |           | STEERING WHEEL WARNING LABEL .....                     | 1    |
| 29   | 608819   |           | STEERING WHEEL WARNING LABEL, CE .....                 | 1    |

# MOTOR



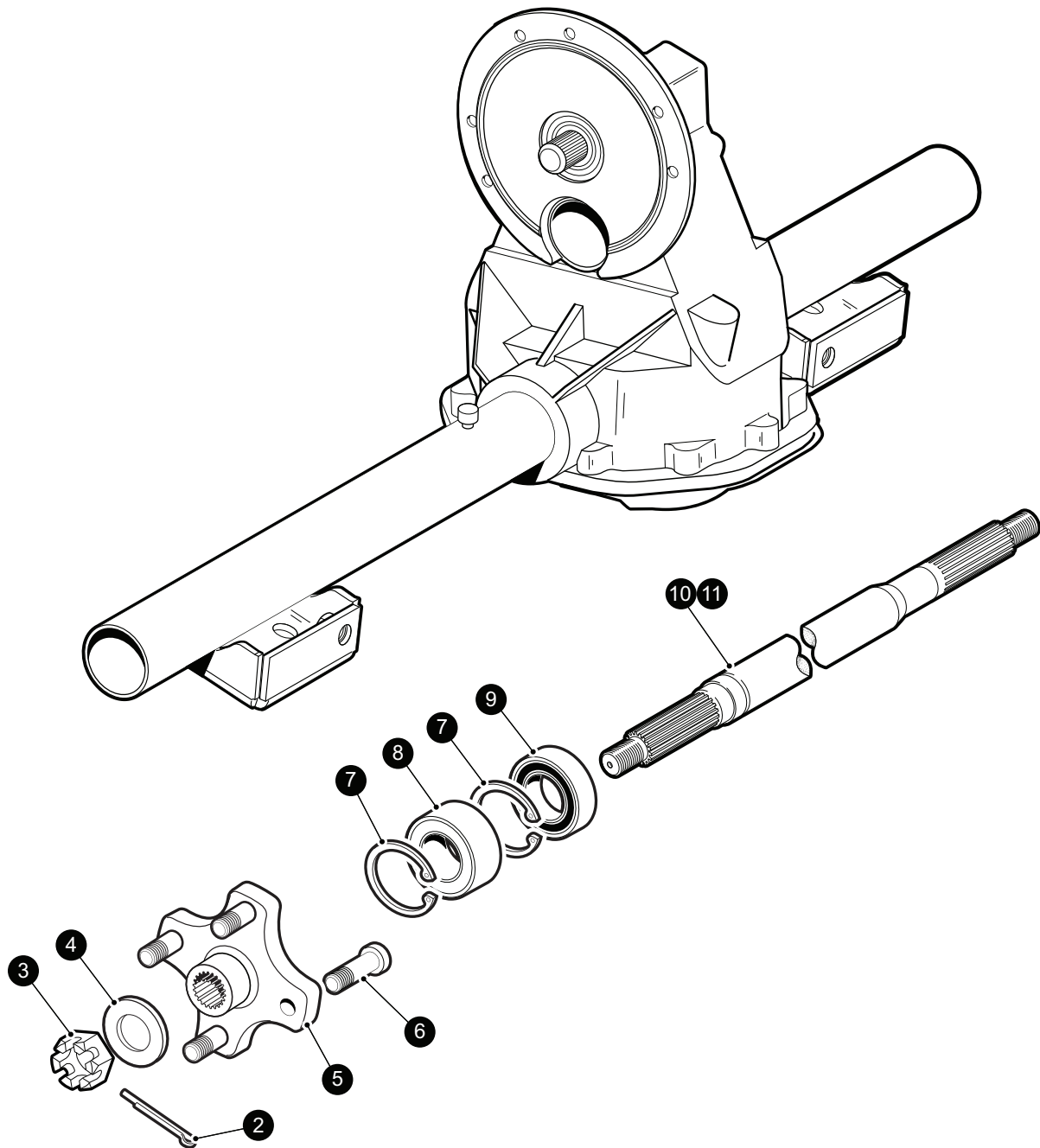
When ordering parts, please specify the model and serial number of the product.

\* Indicates a component that is not available as an individual part.

\*\*\* Indicates consult Customer Service Department for additional information.

| ITEM | PART NO. | 1 2 3 4 5 | DESCRIPTION                                  | QTY. |
|------|----------|-----------|--|------|
| 1    | 601882   |           | 48V AC ELECTRIC MOTOR.....                   | 1    |
| 2    | 605714   |           | FLEXLOOM SLEEVE.....                         | 1    |
| 3    | 601327   |           | LOCK WASHER, M6.....                         | 6    |
| 4    | 605741   |           | HEX HEAD BOLT, M6 - 1 X 25 (grade 10.9)..... | 6    |

## 1 Light Duty Electric Axle Assembly





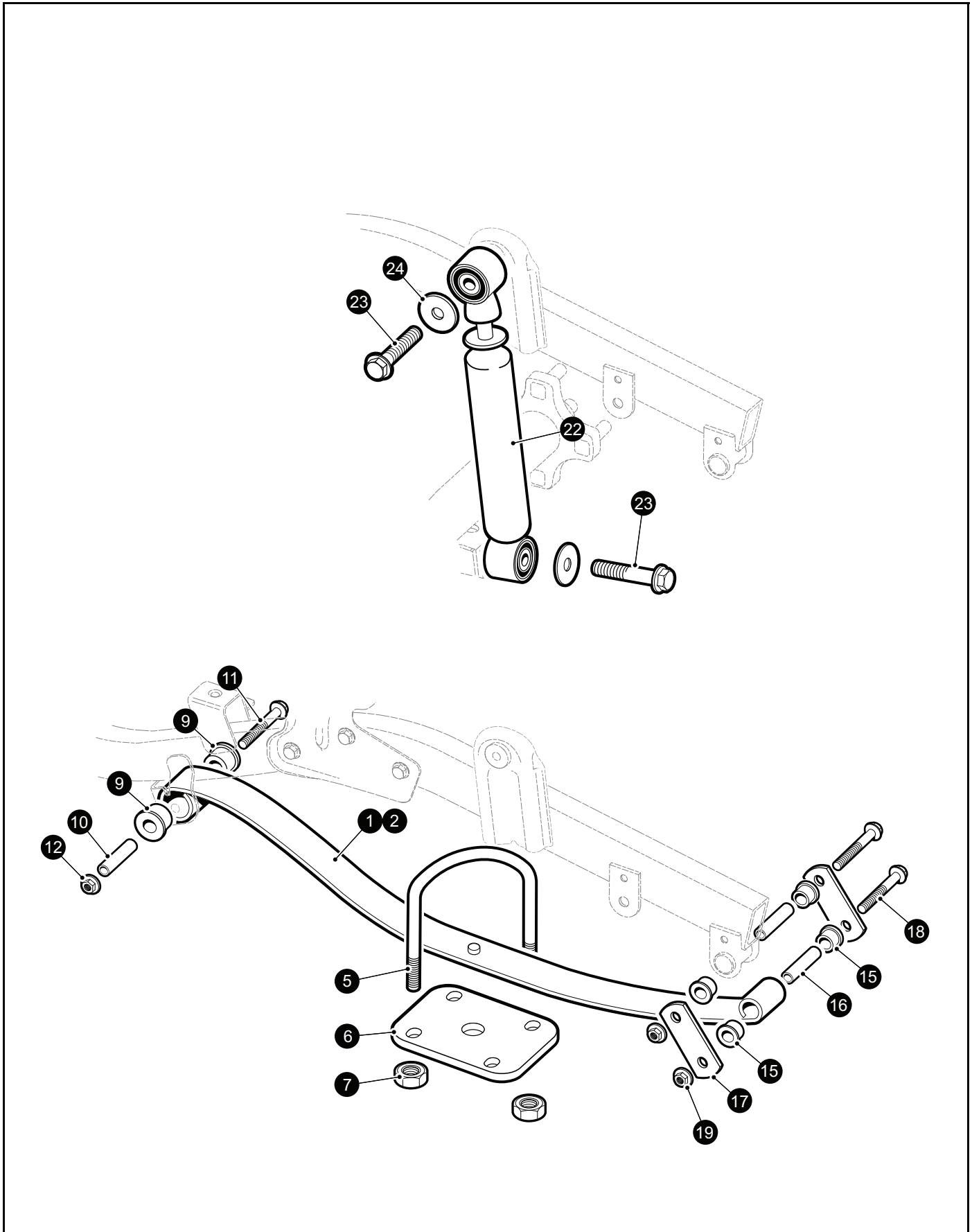
When ordering parts, please specify the model and serial number of the product.

\* Indicates a component that is not available as an individual part.

\*\*\* Indicates consult Customer Service Department for additional information.

| ITEM | PART NO. | 1 2 3 4 5 | DESCRIPTION   | QTY. |
|------|----------|-----------|---|------|
| 1    | 600357   |           | LIGHT DUTY REAR AXLE ASSEMBLY 16.99:1 (includes items 2 - 11) ..... | 1    |
| 2    | 10387-G1 |           | COTTER PIN, .12 DIA X 1.25 .....                                    | 2    |
| 3    | 15483-G1 |           | CASTLE HEX NUT, 5/8 - 16 UNF .....                                  | 2    |
| 4    | 15487-G1 |           | FLAT WASHER, .65 X 1.38 X .12 .....                                 | 2    |
| 5    | 604112   |           | HUB .....   | 2    |
| 6    | 19862-G2 |           | WHEEL BOLT, 1/2 - 20 1.72 .....                                     | 8    |
| 7    | 620342   |           | RETAINING RING .....  | 4    |
| 8    | 620343   |           | BALL BEARING .....  | 2    |
| 9    | 620344   |           | OIL SEAL .....  | 2    |
| 10   | 620337   |           | AXLE SHAFT, DRIVER SIDE (long) .....                                | 1    |
| 11   | 620341   |           | AXLE SHAFT, PASSENGER SIDE (short) .....                            | 1    |

# REAR SUSPENSION



# REAR SUSPENSION

When ordering parts, please specify the model and serial number of the product.

\* Indicates a component that is not available as an individual part.

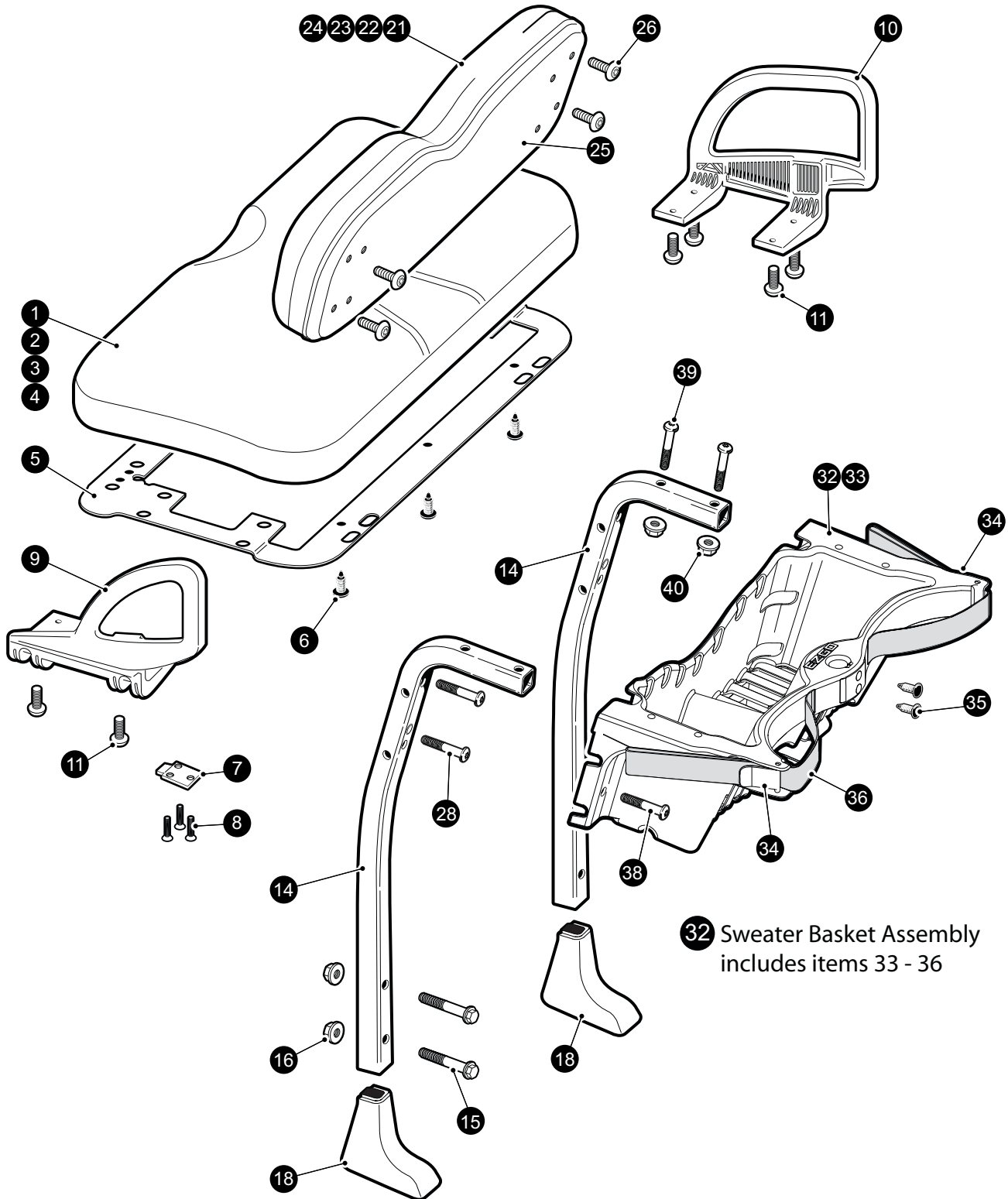
\*\*\* Indicates consult Customer Service Department for additional information.

| ITEM | PART NO.  | 1 2 3 4 5 | DESCRIPTION                                  | QTY. |
|------|-----------|-----------|--|------|
| 1    | 603498    |           | TAPERED LEAF SPRING.....                     | 2    |
| 2    | 604494    |           | HEAVY DUT TAPERED LEAF SPRING .....          | 2    |
| 3    |           |           |  |      |
| 4    |           |           |  |      |
| 5    | 603415    |           | U-BOLT .....                                 | 2    |
| 6    | 603495    |           | LEAF SPRING PLATE .....                      | 2    |
| 7    | 600525    |           | LOCK NUT, M10 - 1.5 .....                    | 4    |
| 8    |           |           |  |      |
| 9    | 620160    |           | FLANGED URETHANE BUSHING (large).....        | 4    |
| 10   | 620161    |           | SPLIT STEEL SPACER .....                     | 2    |
| 11   | 601754    |           | FLANGED HEX HEAD BOLT, M10 - 1.5.....        | 2    |
| 12   | 600525    |           | LOCK NUT, M10 - 1.5 .....                    | 2    |
| 13   |           |           |  |      |
| 14   |           |           |  |      |
| 15   | 70291-G01 |           | FLANGED URETHANE BUSHING (small).....        | 8    |
| 16   | 620161    |           | SPLIT STEEL SPACER .....                     | 4    |
| 17   | 603648    |           | SHACKLE PLATE .....                          | 4    |
| 18   | 601754    |           | FLANGED HEX HEAD BOLT, M10 - 1.5 X 100 ..... | 4    |
| 19   | 600525    |           | LOCK NUT, M10 - 1.5 .....                    | 4    |
| 20   |           |           |  |      |
| 21   |           |           |  |      |
| 22   | 603637    |           | SHOCK ABSORBER .....                         | 2    |
| 23   | 601414    |           | FLANGED HEX HEAD BOLT, M10 - 1.5 X 65 .....  | 4    |
| 24   | 604066    |           | FLAT WASHER, 10.5 X 30 X 2.5 .....           | 4    |

# SEATING & BASKET

1 Seat Bottom Assembly includes items 2 - 11

21 Seat Back Assembly includes items 22 - 26



32 Sweater Basket Assembly includes items 33 - 36

# SEATING & BASKET

When ordering parts, please specify the model and serial number of the product.

\* Indicates a component that is not available as an individual part.

\*\*\* Indicates consult Customer Service Department for additional information.

| ITEM | PART NO.  | 1 2 3 4 5 | DESCRIPTION   | QTY. |
|------|-----------|-----------|---|------|
| 1    | 6XXXXX    |           | SEAT BOTTOM ASSEMBLY (select color below), (includes items 2 - 7) .....<br>605551 .... STONE BEIGE SEAT BOTTOM<br>608013 .... OYSTER SEAT BOTTOM            | 1    |
| 2    | 6XXXXX    |           | SEAT BOTTOM VINYL COVER (select color below) .....<br>600221 .... STONE BEIGE SEAT BOTTOM VINYL COVER<br>608007 .... OYSTER SEAT BOTTOM VINYL COVER         | 1    |
| 3    | 600503    |           | SEAT BOTTOM FOAM.....   | 1    |
| 4    | 600502    |           | SEAT BOTTOM WOODEN BASE ASSEMBLY.....   | 1    |
| 5    | 602551    |           | SEAT BOTTOM COVER PLATE .....   | 1    |
| 6    | 16816-G2  |           | CHRISTMAS TREE RIVET .....  | 4    |
| 7    | 71610-G01 |           | SEAT HINGE .....  | 2    |
| 8    | 00720-G08 |           | FLAT HEAD PHILLIPS TAPPING SCREW, #12 - 14 X 1.00 .....   | 6    |
| 9    | 607532    |           | HIP RESTRAINT, DRIVER SIDE.....   | 1    |
| 10   | 607653    |           | HIP RESTRAINT, PASSENGER SIDE .....   | 1    |
| 11   | 600530    |           | BUTTON HEAD TORX BOLT, M10 - 1.5 X 25.....  | 8    |
| 12   |           |           |   |      |
| 13   |           |           |   |      |
| 14   | 602413    |           | SEAT BACK SUPPORT STRUT.....  | 2    |
| 15   | 603800    |           | FLANGED HEX HEAD BOLT, M10 - 1.5 X 50 .....   | 4    |
| 16   | 600525    |           | LOCK NUT, M10 - 1.5 .....   | 4    |
| 17   |           |           |   |      |
| 18   | 602112    |           | SEAT BACK SUPPORT STRUT COVER.....  | 2    |
| 19   |           |           |   |      |
| 20   |           |           |   |      |
| 21   | 6XXXXX    |           | SEAT BACK ASSEMBLY (select color below), (includes items 22 - ).....<br>605548 .... STONE BEIGE SEAT BACK ASSEMBLY<br>608012 .... OYSTER SEAT BACK ASSEMBLY | 1    |
| 22   | 6XXXXX    |           | SEAT BACK VINYL COVER (select color below).....<br>605537 .... STONE BEIGE SEAT BACK VINYL COVER<br>608006 .... OYSTER SEAT BACK VINYL COVER                | 1    |
| 23   | 71754-G01 |           | SEAT BACK FOAM .....  | 1    |
| 24   | 605550    |           | SEAT BACK WOODEN BASE ASSEMBLY .....  | 1    |

# SEATING & BASKET

When ordering parts, please specify the model and serial number of the product.

\* Indicates a component that is not available as an individual part.

\*\*\* Indicates consult Customer Service Department for additional information.

| ITEM | PART NO. | 1 | 2 | 3 | 4 | 5 | DESCRIPTION   | QTY. |
|------|----------|---|---|---|---|---|---|------|
| 25   | 605529   |   |   |   |   |   | SEAT BACK BLACK PLASTIC COVER.....                      | 1    |
| 26   | 603000   |   |   |   |   |   | BUTTON HEAD TORX SCREW, PLASTITE THREAD FORMING, M6 - 1 | 4    |
| 27   |          |   |   |   |   |   |   |      |
| 28   | 600527   |   |   |   |   |   | BUTTON HEAD TORX BOLT, M10 - 1.5 X 60.....              | 4    |
| 29   |          |   |   |   |   |   |   |      |
| 30   |          |   |   |   |   |   |   |      |
| 31   |          |   |   |   |   |   |   |      |
| 32   | 602742   |   |   |   |   |   | SWEATER BASKET ASSEMBLY (includes items 33 - 36) .....  | 1    |
| 33   | 600228   |   |   |   |   |   | SWEATER BASKET .....                                    | 1    |
| 34   | 608051   |   |   |   |   |   | BAG STRAP CLAMP .....                                   | 2    |
| 35   | 16816-G1 |   |   |   |   |   | CHRISTMAS TREE RIVET.....                               | 2    |
| 36   | 604102   |   |   |   |   |   | BAG STRAP.....  | 1    |
| 37   |          |   |   |   |   |   |   |      |
| 38   | 600530   |   |   |   |   |   | BUTTON HEAD TORX BOLT, M10 - 1.5 X 25.....              | 2    |
| 39   | 600527   |   |   |   |   |   | BUTTON HEAD TORX BOLT, M10 - 1.5 X 60.....              | 4    |
| 40   | 600525   |   |   |   |   |   | LOCK NUT, M10 - 1.5.....                                | 4    |



# SEATING & BASKET





# SEATING & BASKET

When ordering parts, please specify the model and serial number of the product.

\* Indicates a component that is not available as an individual part.

\*\*\* Indicates consult Customer Service Department for additional information.

| ITEM | PART NO.  | 1 2 3 4 5 | DESCRIPTION   | QTY. |
|------|-----------|-----------|---|------|
| 1    | 604473    |           | SEAT BACK SUPPORT, 2 + 2 SEAT .....                                     | 1    |
| 2    | 603800    |           | HEX HEAD FLANGED BOLT, M10 - 1.5 X 50 .....                             | 4    |
| 3    | 600525    |           | LOCK NUT, M10 - 1.5 .....   | 4    |
| 4    |           |           |   |      |
| 5    | 606286    |           | REAR SEAT BACK MOUNTING BRACKET.....                                    | 2    |
| 6    | 604723    |           | ARM REST, DRIVER SIDE .....   | 1    |
| 7    | 604725    |           | ARM REST, PASSENGER SIDE .....  | 1    |
| 8    | 600530    |           | BUTTON HEAD TORX BOLT, M10 - 1.5 X 25 .....                             | 4    |
| 9    | 600525    |           | LOCK NUT, M10 - 1.5 .....   | 4    |
| 10   |           |           |   |      |
| 11   |           |           |   |      |
| 12   | 604457    |           | REAR FACING SEAT FLOORBOARD ASSEMBLY (includes items 7 - 10)...         | 1    |
| 13   | 604398    |           | FOOTREST WELDMENT .....   | 1    |
| 14   | 74074-G01 |           | 2 + 2 WARNING DECAL .....   | 1    |
| 15   | 19853-G1  |           | END CAP.....  | 2    |
| 16   | 604407    |           | RUBBER FLOORMAT .....   | 1    |
| 17   | 603799    |           | HEX HEAD FLANGED BOLT, M10 - 1.5 X 25 .....                             | 4    |
| 18   |           |           |   |      |
| 19   | 608820    |           | 2 + 2 WARNING DECAL, CE.....  | 1    |
| 20   | 602415    |           | HEX HEAD FLANGED BOLT, M10 - 1.5 X 80 .....                             | 2    |
| 21   | 600525    |           | LOCK NUT, M10 - 1.5 .....   | 2    |
| 22   |           |           |   |      |
| 23   | 6XXXX     |           | SEAT BOTTOM ASSEMBLY (select color below) (includes items 24 - 26) .... | 1    |
|      |           |           | 605501 .... STONE BEIGE SEAT BOTTOM ASSEMBLY                            |      |
|      |           |           | 608010 .... OYSTER SEAT BOTTOM ASSEMBLY                                 |      |
| 24   | 6XXXXX    |           | SEAT BOTTOM VINYL COVER (select color below) .....                      | 1    |
|      |           |           | 600221 .... STONE BEIGE SEAT BOTTOM VINYL COVER                         |      |
|      |           |           | 608007 .... OYSTER SEAT BOTTOM VINYL COVER                              |      |
| 25   | 605503    |           | SEAT BOTTOM FOAM.....   | 1    |
| 26   | 605502    |           | SEAT BOTTOM WOODEN BASE ASSEMBLY.....                                   | 1    |
| 27   | 603799    |           | HEX HEAD FLANGED BOLT, M10 - 1.5 X 25 .....                             | 4    |

# SEATING & BASKET

When ordering parts, please specify the model and serial number of the product.

\* Indicates a component that is not available as an individual part.

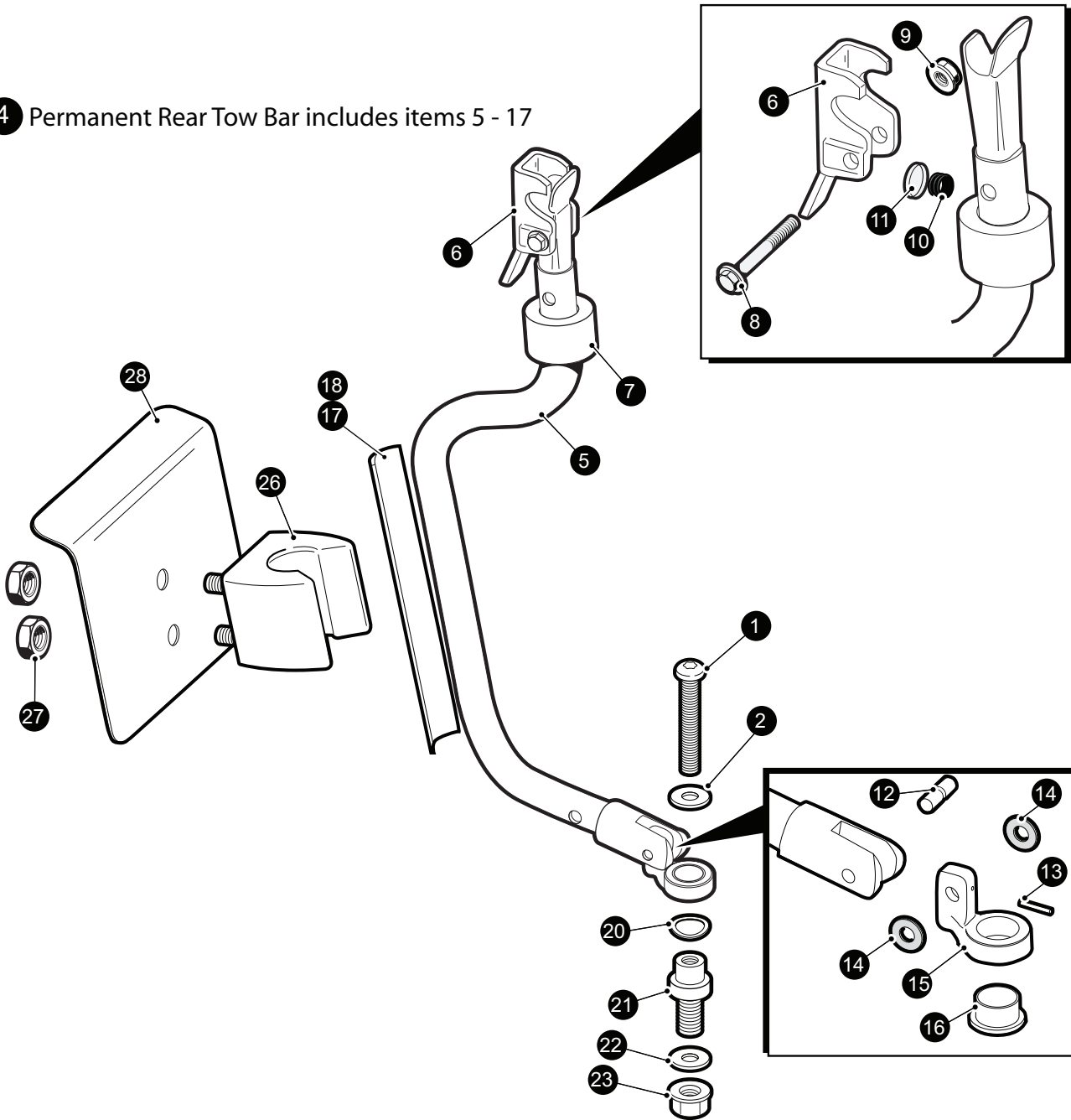
\*\*\* Indicates consult Customer Service Department for additional information.

| ITEM | PART NO.  | 1 2 3 4 5 | DESCRIPTION   | QTY. |
|------|-----------|-----------|---|------|
| 28   |           |           |   |      |
| 29   |           |           |   |      |
| 30   | 6XXXX     |           | SEAT BACK ASSEMBLY (select color below).....<br>605548..... STONE BEIGE SEAT BACK ASSEMBLY<br>608012..... OYSTER SEAT BACK ASSEMBLY           | 1    |
| 31   | 6XXXXX    |           | SEAT BACK VINYL COVER (select color below) .....<br>605537..... STONE BEIGE SEAT BACK VINYL COVER<br>608006..... OYSTER SEAT BACK VINYL COVER | 1    |
| 32   | 71754-G01 |           | SEAT BACK FOAM.....   | 1    |
| 33   | 605550    |           | SEAT BACK WOODEN BASE ASSEMBLY .....  | 1    |
| 34   | 605529    |           | SEAT BACK BLACK PLASTIC COVER.....  | 1    |
| 35   | 603000    |           | BUTTON HEAD TORX SCREW, PLASTITE THREAD FORMING, M6 - 1   | 4    |
| 36   |           |           |   |      |
| 37   | 600530    |           | BUTTON HEAD TORX BOLT, M101 - 1.5 X 25.....   | 2    |
| 38   |           |           |   |      |
| 39   |           |           |   |      |
| 40   | 600530    |           | BUTTON HEAD TORX BOLT, M10 - 1.5 X 25.....  | 2    |
| 41   | 603818    |           | BARREL CLIP, M10 - 1.5 .....  | 2    |



# TOW BAR

4 Permanent Rear Tow Bar includes items 5 - 17



When ordering parts, please specify the model and serial number of the product.

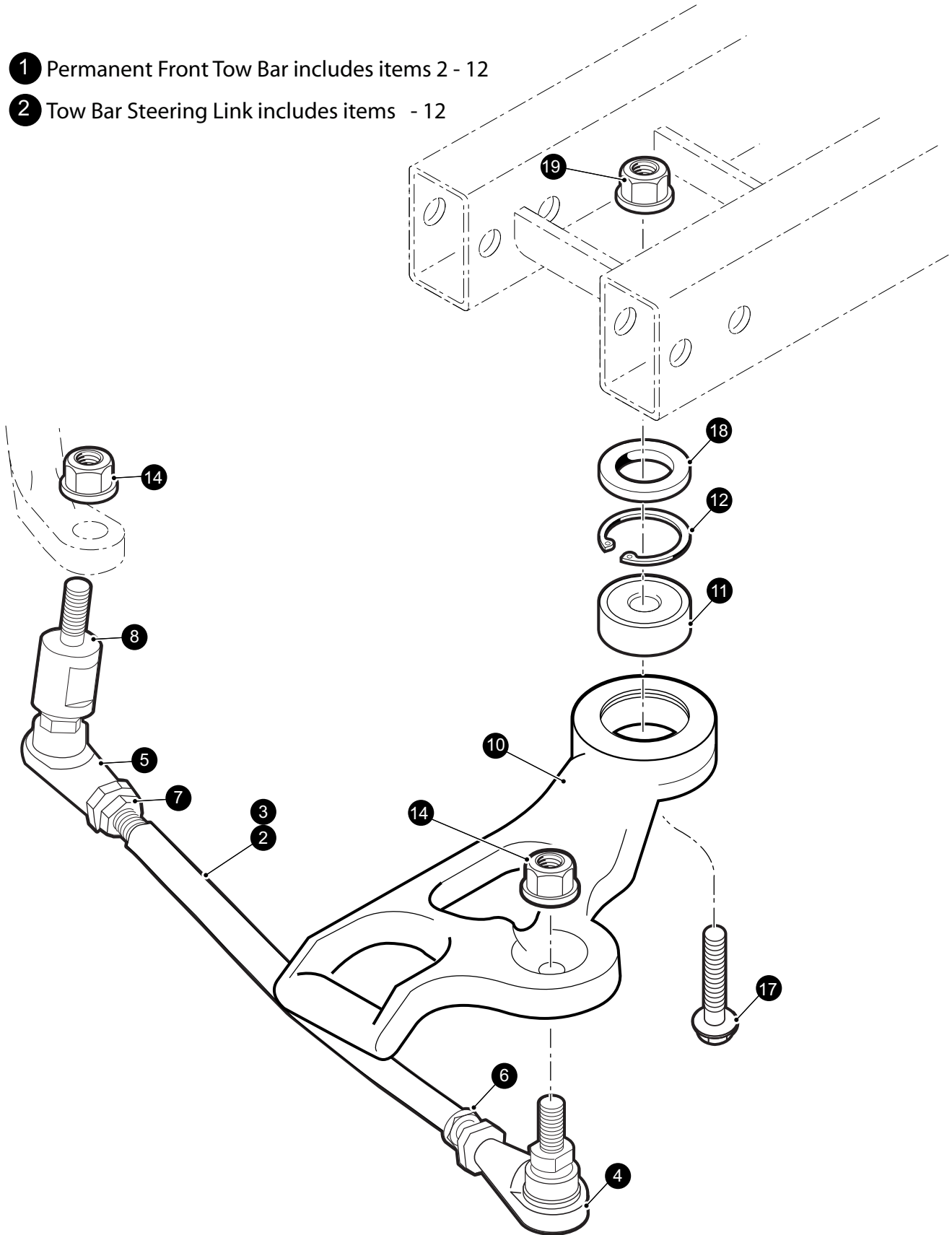
\* Indicates a component that is not available as an individual part.

\*\*\* Indicates consult Customer Service Department for additional information.

| ITEM | PART NO.  | 1 2 3 4 5 | DESCRIPTION   | QTY. |
|------|-----------|-----------|---|------|
| 1    | 603384    |           | PAN HEAD TORX BOLT, M12 - 1.25 X 100.....                         | 1    |
| 2    | 603182    |           | FLAT WASHER, M12, 13.5 X 32 X 3 .....                             | 1    |
| 3    |           |           |   |      |
| 4    | 603476    |           | PERMANENT TOW BAR (towing vehicle), (includes items 5 - 17) ..... | 1    |
| 5    | 603316    |           | TOW BAR .....   | 1    |
| 6    | 603236    |           | LATCH .....   | 1    |
| 7    | 75362-G01 |           | LATCH STOP .....  | 1    |
| 8    | 601414    |           | HEX HEAD FLANGED BOLT, M10 - 1.5 X 65 .....                       | 1    |
| 9    | 600525    |           | FLANGED LOCK NUT, M10 - 1.5.....                                  | 1    |
| 10   | 20852-G2  |           | COMPRESSION SPRING .....  | 1    |
| 11   | 25661-G02 |           | CUP WASHER .....  | 1    |
| 12   | 603494    |           | PIVOT PIN.....  | 1    |
| 13   | 608793    |           | SPRING PIN.....   | 1    |
| 14   | 75340-G01 |           | DELTRIN WASHER.....   | 2    |
| 15   | 602988    |           | TOW BAR SWIVEL .....  | 1    |
| 16   | 70648-G01 |           | FLANGED BUSHING .....   | 1    |
| 17   | 608525    |           | TOW BAR WARNING DECAL.....  | 1    |
| 18   | 608525    |           | TOW BAR WARNING DECAL, CE .....                                   | 1    |
| 19   |           |           |   |      |
| 20   | 603341    |           | WAVE SPRING WASHER, 32mm .....                                    | 1    |
| 21   | 602990    |           | TOW BAR PIVOT.....  | 1    |
| 22   | 603182    |           | FLAT WASHER, M12, 13.5 X 32 X 3 .....                             | 1    |
| 23   | 600549    |           | FLANGED HEX NUT, M12 - 1.25.....                                  | 1    |
| 24   |           |           |   |      |
| 25   |           |           |   |      |
| 26   | 603020    |           | REAR TOW BAR RETAINER .....                                       | 1    |
| 27   | 600525    |           | FLANGED HEX NUT, M10 - 1.5.....                                   | 2    |
| 28   | 608757    |           | RETAINER BACKING PLATE .....                                      | 1    |

# TOW BAR

- 1 Permanent Front Tow Bar includes items 2 - 12
- 2 Tow Bar Steering Link includes items - 12



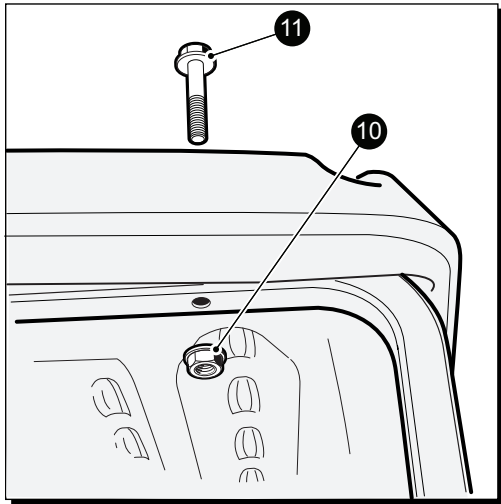
When ordering parts, please specify the model and serial number of the product.

\* Indicates a component that is not available as an individual part.

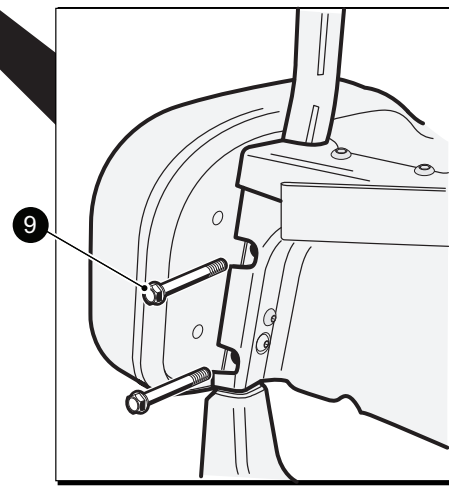
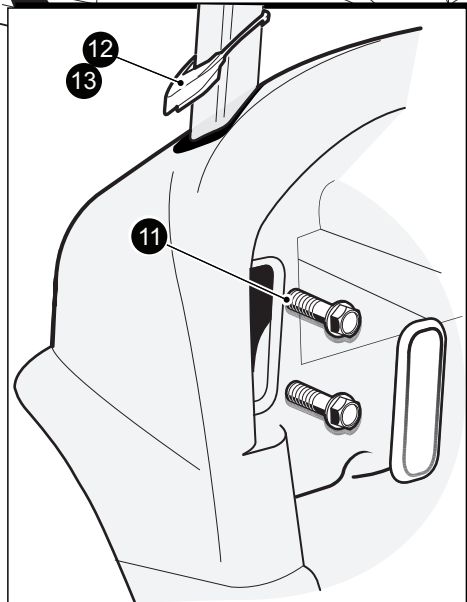
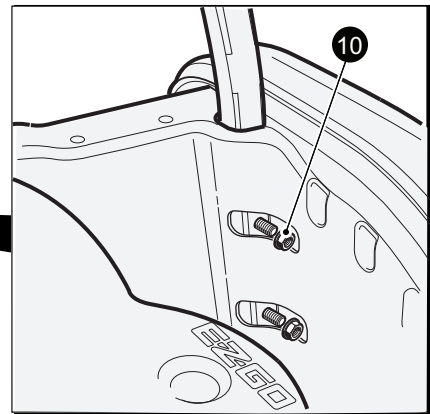
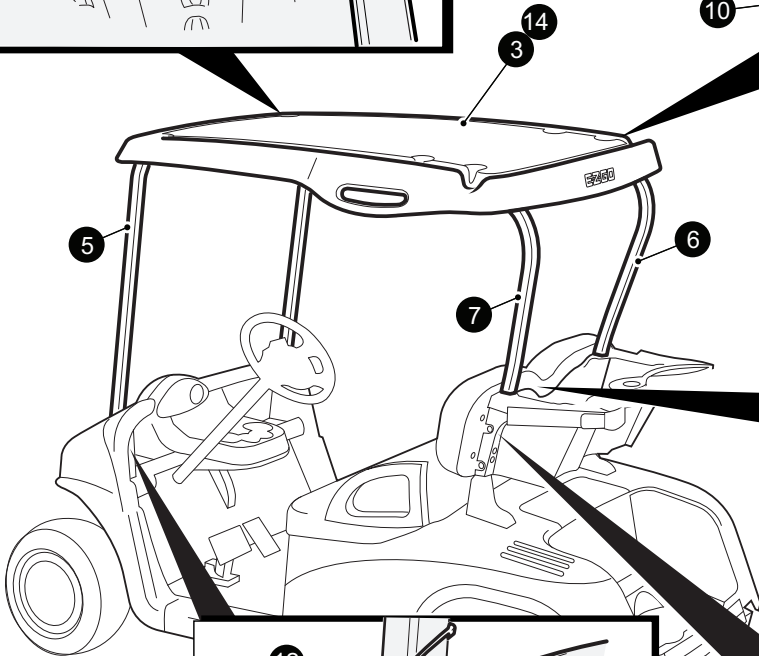
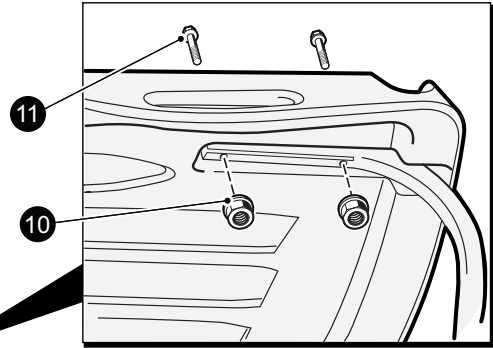
\*\*\* Indicates consult Customer Service Department for additional information.

| ITEM | PART NO. | 1 2 3 4 5 | DESCRIPTION   | QTY. |
|------|----------|-----------|---|------|
| 1    | 603475   |           | PERMANENT TOW BAR (towed vehicle) (includes items 2 - 12) ..... | 1    |
| 2    | 601624   |           | TOW BAR STEERING LINK (includes items 3 - 8) .....              | 1    |
| 3    | 603297   |           | TOW BAR TIE ROD .....   | 1    |
| 4    | 603322   |           | LEFT HAND TIE ROD END .....                                     | 1    |
| 5    | 601266   |           | RIGHT HAND TIE ROD END .....                                    | 1    |
| 6    | 603487   |           | JAM NUT, M12 - 1.25 LH .....                                    | 1    |
| 7    | 603488   |           | JAM NUT, M12 - 1.25 RH .....                                    | 1    |
| 8    | 608739   |           | SPACER .....  | 1    |
| 9    |          |           |   |      |
| 10   | 601389   |           | FRONT TOW BAR CASTING .....                                     | 1    |
| 11   | 606073   |           | BEARING .....   | 1    |
| 12   | 607322   |           | INTERNAL SNAP RING .....  | 1    |
| 13   |          |           |   |      |
| 14   | 600549   |           | FLANGED HEX NUT, M12 - 1.25 .....                               | 2    |
| 15   |          |           |   |      |
| 16   |          |           |   |      |
| 17   | 607365   |           | HEX HEAD FLANGED BOLT, M16 - 2 X 70 .....                       | 1    |
| 18   | 606293   |           | FRONT TOW BAR SPACER .....                                      | 1    |
| 19   | 601709   |           | LOCKING HEX NUT, M16 - 2 .....                                  | 1    |

# WEATHER PROTECTION



- 1 Stone Beige Sun Top Kit includes items 3 & 4
- 2 Oyster Sun Top Kit includes items 4 & 14
- 4 Strut Kit includes items 5 - 8
- 8 Sun Top Hardware Kit includes items 9 - 13





# WEATHER PROTECTION

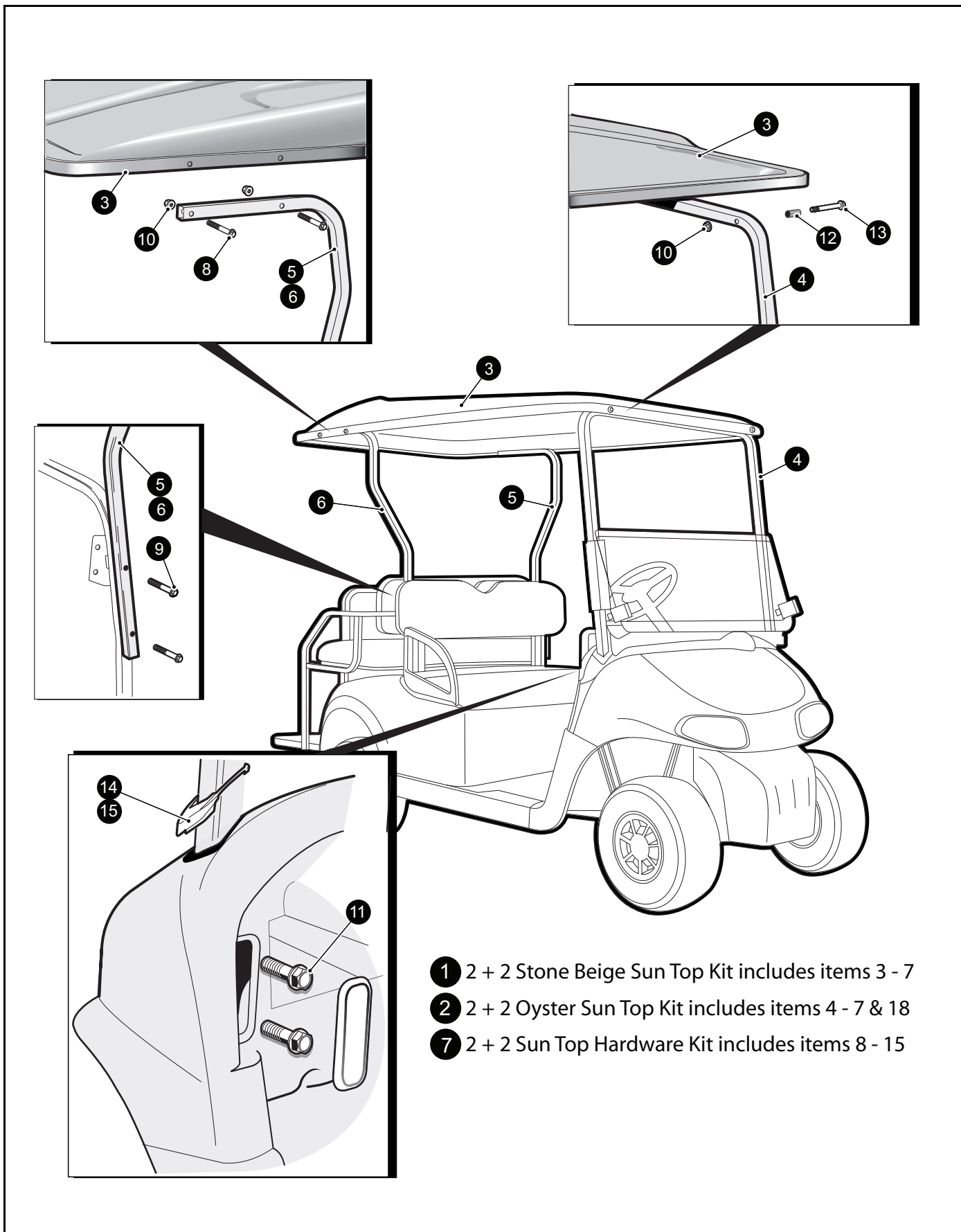
When ordering parts, please specify the model and serial number of the product.

\* Indicates a component that is not available as an individual part.

\*\*\* Indicates consult Customer Service Department for additional information.

| ITEM | PART NO. | 1 2 3 4 5 | DESCRIPTION   | QTY. |
|------|----------|-----------|---|------|
| 1    | 606354   |           | SUN TOP KIT, STONE BEIGE (includes items 3 & 4) ..... | 1    |
| 2    | 608695   |           | SUN TOP KIT, OYSTER (includes items 4 & 14).....      | 1    |
| 3    | 608198   |           | SUN TOP, STONE BEIGE .....                            | 1    |
| 4    | 608677   |           | SUN TOP STRUT KIT (includes items 5 - 8.....          | 1    |
| 5    | 603203   |           | FRONT STRUT .....                                     | 1    |
| 6    | 603370   |           | REAR STRUT, PASSENGER SIDE .....                      | 1    |
| 7    | 603369   |           | REAR STRUT, DRIVER SIDE.....                          | 1    |
| 8    | 607013   |           | SUN TOP HARDWARE KIT (includes items 9 - 13) .....    | 1    |
| 9    | 602415   |           | HEX HEAD FLANGED BOLT, M10 - 1.5 X 80.....            | 4    |
| 10   | 600525   |           | FLANGED LOCK NUT, M10 - 1.5.....                      | 10   |
| 11   | 603800   |           | HEX HEAD FLANGED BOLT, M10 - 1.5 X 50.....            | 10   |
| 12   | 602770   |           | GROMMET, DRIVER SIDE .....                            | 1    |
| 13   | 602992   |           | GROMMET, PASSENGER SIDE.....                          | 1    |
| 14   | 608015   |           | SUN TOP, OYSTER .....                                 | 1    |

# WEATHER PROTECTION



# WEATHER PROTECTION

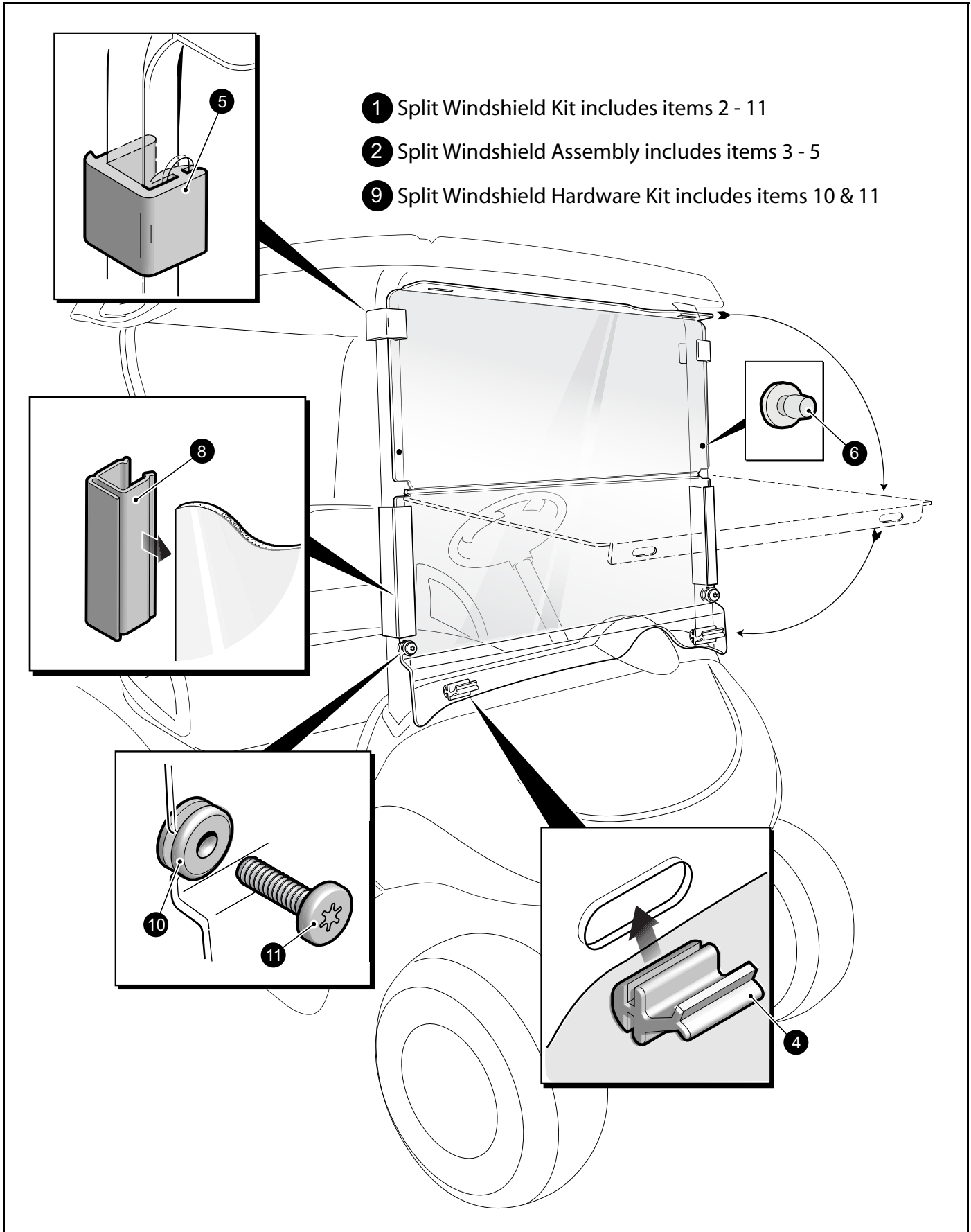
When ordering parts, please specify the model and serial number of the product.

\* Indicates a component that is not available as an individual part.

\*\*\* Indicates consult Customer Service Department for additional information.

| ITEM | PART NO. | 1 2 3 4 5 | DESCRIPTION   | QTY. |
|------|----------|-----------|---|------|
| 1    | 604568   |           | 2 + 2 SUN TOP KIT, STONE BEIGE (includes items 3 - 7) ..... | 1    |
| 2    | 608893   |           | 2 + 2 SUN TOP KIT, OYSTER (includes items 4 -7 & 18)        |      |
| 3    | 603854   |           | 2 + 2 SUN TOP, STONE BEIGE .....                            | 1    |
| 4    | 603203   |           | FRONT STRUT .....   | 1    |
| 5    | 604423   |           | 2 + 2 REAR STRUT, DRIVER SIDE .....                         | 1    |
| 6    | 604424   |           | 2 + 2 REAR STRUT, PASSENGER SIDE .....                      | 1    |
| 7    | 604378   |           | 2 + 2 SUN TOP HARDWARE KIT (includes items 8 - 15) .....    | 1    |
| 8    | 601414   |           | HEX HEAD FLANGED BOLT, M10 - 1.5 X 65 .....                 | 4    |
| 9    | 602415   |           | HEX HEAD FLANGED BOLT, M10 - 1.5 X 80 .....                 | 4    |
| 10   | 600525   |           | FLANGED LOCK NUT, M10 - 1.5 .....                           | 6    |
| 11   | 603800   |           | HEX HEAD FLANGED BOLT, M10 - 1.5 X 50 .....                 | 4    |
| 12   | 607329   |           | SPACER TUBE .....   | 2    |
| 13   | 601754   |           | HEX HEAD FLANGED BOLT, M10 - 1.5 X 100 .....                | 2    |
| 14   | 602770   |           | STRUT GROMMET, DRIVER SIDE .....                            | 1    |
| 15   | 602992   |           | STRUT GROMMET, PASSENGER SIDE .....                         | 1    |
| 16   |          |           |   |      |
| 17   |          |           |   |      |
| 18   | 608894   |           | 2 + 2 SUN TOP, OYSTER .....                                 | 1    |

# WEATHER PROTECTION



# WEATHER PROTECTION

When ordering parts, please specify the model and serial number of the product.

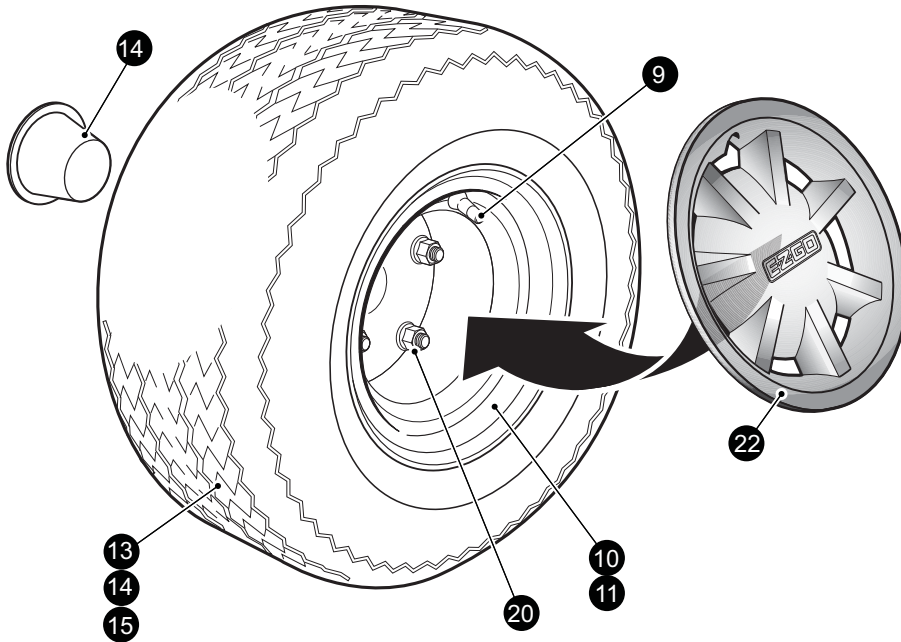
\* Indicates a component that is not available as an individual part.

\*\*\* Indicates consult Customer Service Department for additional information.

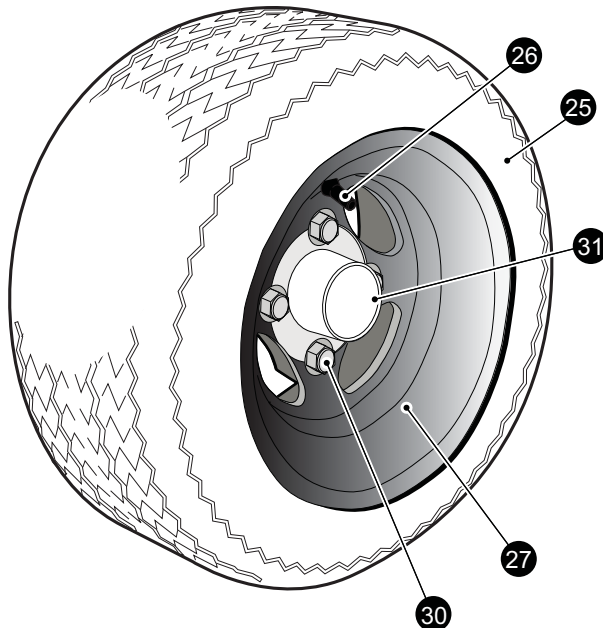
| ITEM | PART NO. | 1 2 3 4 5 | DESCRIPTION  | QTY. |
|------|----------|-----------|--|------|
| 1    | 606584   |           | SPLIT WINDSHIELD KIT (includes items 2 - 11).....            | 1    |
| 2    | 606623   |           | SPLIT WINDSHIELD ASSEMBLY (includes items 3 - 5).....        | 1    |
| 3    | 603738   |           | SPLIT WINDSHIELD.....  | 1    |
| 4    | 603201   |           | LOWER WINDSHIELD LATCH.....                                  | 2    |
| 5    | 603198   |           | UPPER WINDSHIELD LATCH.....                                  | 2    |
| 6    | 604115   |           | WINDSHIELD ISOLATOR.....                                     | 2    |
| 7    |          |           |  |      |
| 8    | 603852   |           | WINDSHIELD ATTACHMENT SASH.....                              | 2    |
| 9    | 607014   |           | SPLIT WINDSHIELD HARDWARE KIT (includes items 10 & 11) ..... | 1    |
| 10   | 604116   |           | GROMMET .....  | 2    |
| 11   | 602572   |           | PAN HEAD TORX BOLT, M10 - 1.5 X 25.....                      | 2    |

# WHEELS AND TIRES

- 1 LINKS STONE BEIGE WHEEL & TIRE ASSEMBLY (includes items 9, 10 & 13)
- 2 LINKS WHITE WHEEL & TIRE ASSEMBLY (includes items 9, 11 & 13)
- 3 T - SHOT STONE BEIGE WHEEL & TIRE ASSY (includes items 9, 10 & 14)
- 4 T - SHOT WHITE WHEEL & TIRE ASSEMBLY (includes items 9, 11 & 14)
- 5 USA STONE BEIGE WHEEL& TIRE ASSEMBLY (includes items 9, 10 & 15)
- 6 USA WHITE WHEEL& TIRE ASSEMBLY (includes items 9, 11 & 15)



- 24 ALLOY WHEEL AND TIRE ASSEMBLY (includes items 25 - 27)



# WHEELS AND TIRES

When ordering parts, please specify the model and serial number of the product.

\* Indicates a component that is not available as an individual part.

\*\*\* Indicates consult Customer Service Department for additional information.

| ITEM | PART NO.  | 1 2 3 4 5 | DESCRIPTION   | QTY. |
|------|-----------|-----------|---|------|
| 1    | 603173    |           | LINKS STONE BEIGE WHEEL & TIRE ASSEMBLY (includes items 9, 10 & 13) | 1    |
| 2    | 28757G01  |           | LINKS WHITE WHEEL & TIRE ASSEMBLY (includes items 9, 11 & 13) ..... | 1    |
| 3    | 605713    |           | T - SHOT STONE BEIGE WHEEL & TIRE ASSY (includes items 9, 10 & 14)  | 1    |
| 4    | 609007    |           | T - SHOT WHITE WHEEL & TIRE ASSEMBLY (includes items 9, 11 & 14) .. | 1    |
| 5    | 603216    |           | USA STONE BEIGE WHEEL& TIRE ASSEMBLY (includes items 9, 10 & 15)    | 1    |
| 6    | 28842G01  |           | USA WHITE WHEEL& TIRE ASSEMBLY (includes items 9, 11 & 15) .....    | 1    |
| 7    |           |           |   |      |
| 8    |           |           |   |      |
| 9    | 11657G2   |           | VALVE STEM.....   | 1    |
| 10   | 603172    |           | STONE BEIGE WHEEL.....  | 1    |
| 11   | 28759G01  |           | WHITE WHEEL .....   | 1    |
| 12   |           |           |   |      |
| 13   | 28764G01  |           | CARLISLE LINKS TIRE, 18 X 8.5 - 8.....                              | 1    |
| 14   | 606379    |           | CARLISLE T - SHOT TIRE, 4 PLY 18 X 8.5 - 8 .....                    | 1    |
| 15   | 28764-G08 |           | CARLISLE USA TRAIL TIRE 18.5 X 8.5 - 8.....                         | 1    |
| 16   |           |           |   |      |
| 17   |           |           |   |      |
| 18   |           |           |   |      |
| 19   |           |           |   |      |
| 20   | 14723-G1  |           | LUG NUT, 1/2 - 20 UNF .....   | 4    |
| 21   | 74175-G01 |           | DUST CAP .....  | 1    |
| 22   | 603785    |           | HUB CAP .....   | 1    |
| 23   |           |           |   |      |
| 24   | 600599    |           | ALLOY WHEEL AND TIRE ASSEMBLY (includes items 25 - 27) .....        | 1    |
| 25   | 601768    |           | TOUR MAX TIRE, 205 / 50 - 10 .....                                  | 1    |
| 26   | 601767    |           | VALVE STEM.....   | 1    |
| 27   | 601766    |           | ITP ALLOY WHEEL.....  | 1    |
| 28   |           |           |   |      |
| 29   |           |           |   |      |
| 30   | 605310    |           | CHROME LUG NUT, 1/20-020 UNF .....                                  | 4    |
| 31   | 601353    |           | ALLOY WHEEL CAP .....   | 1    |









A Textron Company

**E-Z-GO Division of Textron, Inc.,**  
1451 Marvin Griffin Road, Augusta, Georgia 30906 - 3852 USA

**TO CONTACT US...**

North America:

**Technical Assistance & Warranty  
Service Parts**

Phone: 1-800-774-3946, FAX: 1-800-448-8124

Phone: 1-888-GET-E-Z-GO (1-888-438-3946), FAX: 1-800-752-6175

International:

Phone: 001-706-798-4311, FAX: 001-706-771-4609

ISO 9001  
ISO 14001

**BUREAU VERITAS**  
Certification



Copyrighted Material  
This manual may not be reproduced in whole or  
in part without the express permission of  
E-Z-GO Division of Textron, Inc.  
Technical Communications Department